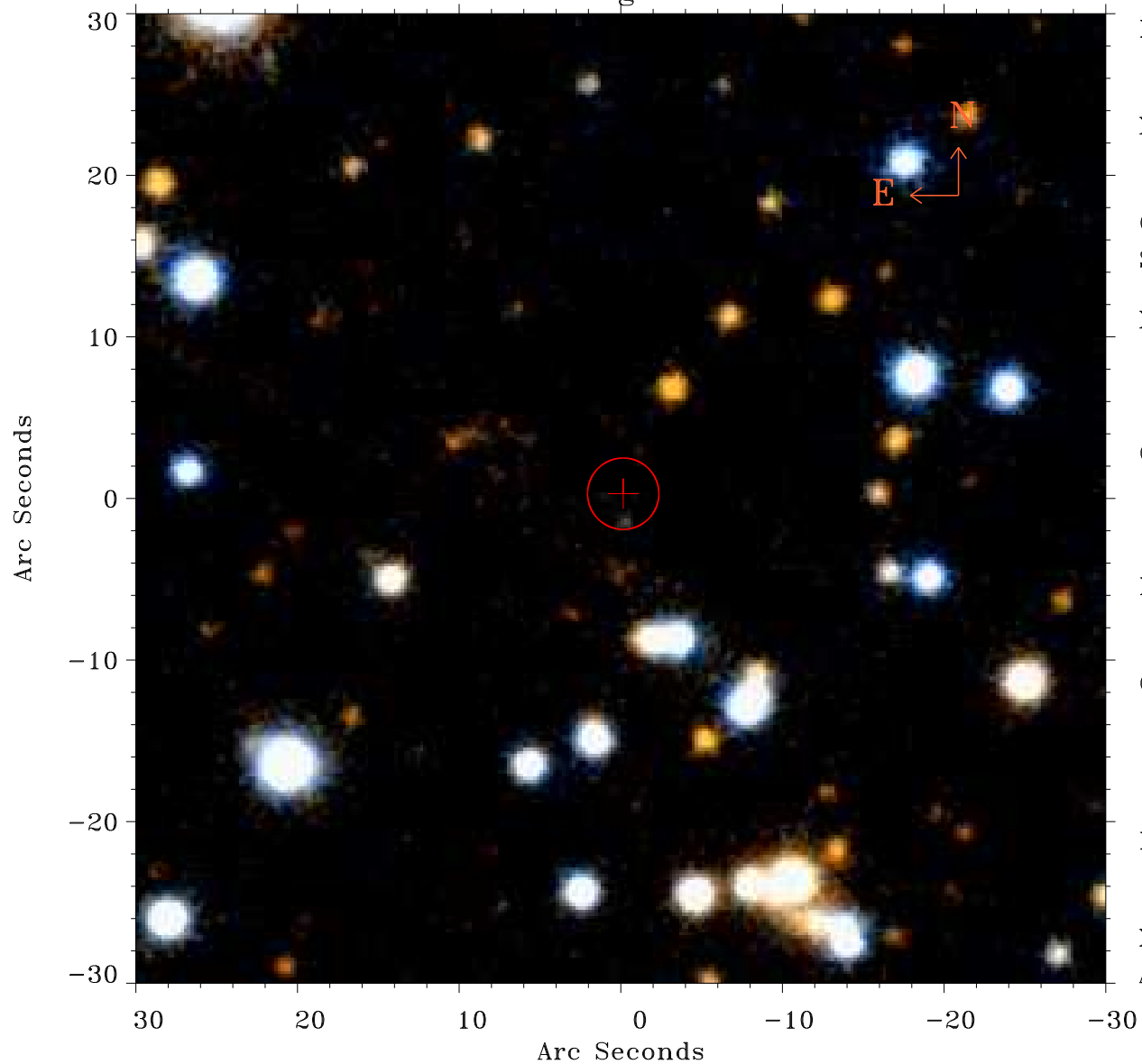


# EPIC source finding chart ACDS V10.0



Principal Investigator :

Dr Darren Baskill

XMM target name :

V426 Oph

OBS ID : 306290101

Source number : 16

X-ray coordinates :

$\alpha$  : 18 07 40.02

$\delta$  : +05 45 45.9

Center coordinates :

$\alpha$  : 18 07 40.02

$\delta$  : +05 45 45.8

Plate reference :

Origin : PanSTARRS-DR1

Color coding :

z band ●

(z+g)/2 ●

g band ●

Error:

R90 : 2.2 arcsec

XMM SSC

Apr 18 16:49:25 2019