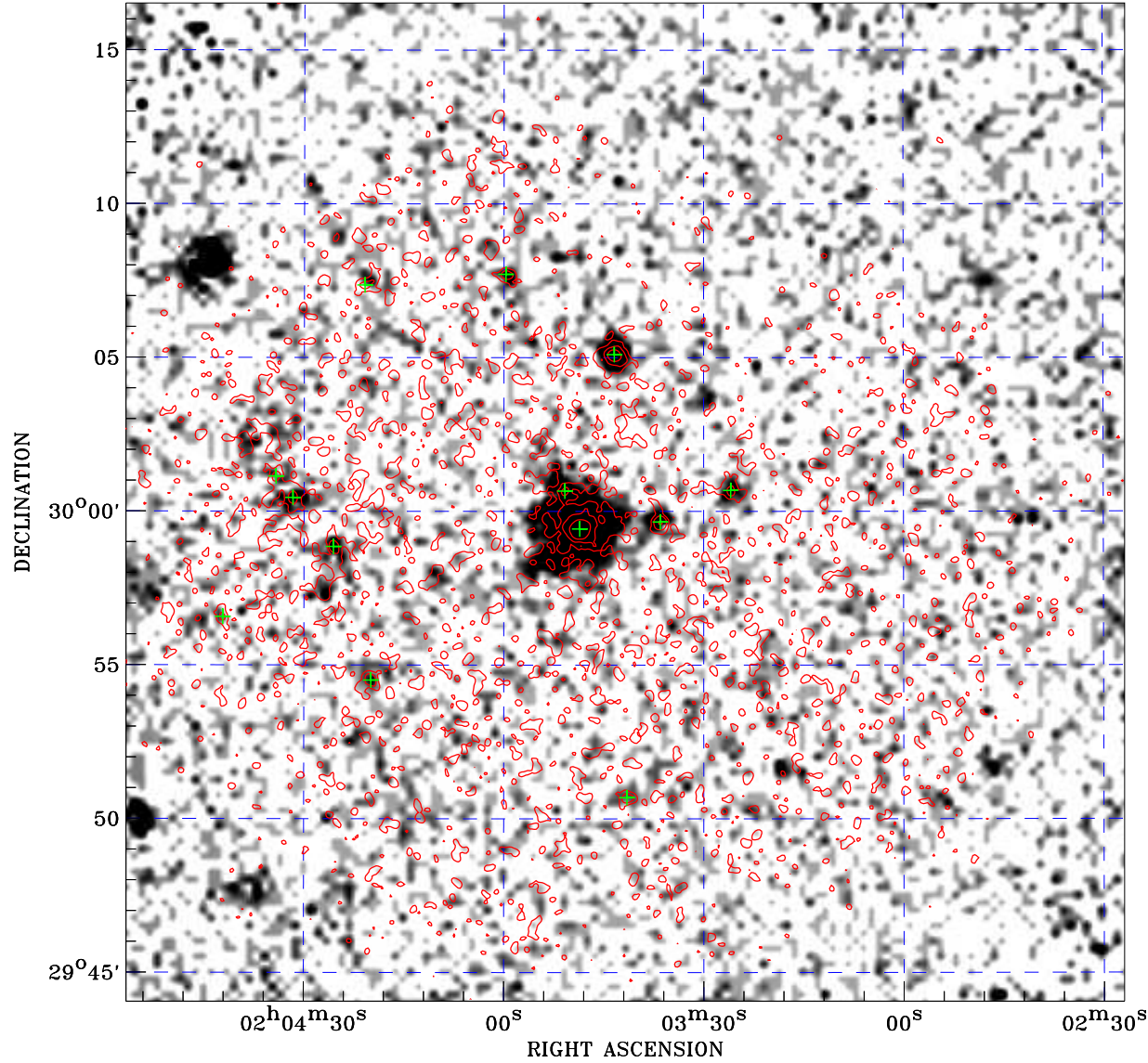


PDF XMM ROSAT image ACDS V10.0



Principal Investigator :
Dr Klaus Reinsch

XMM target name :
AI Tri

Observation ID :
0306841001

Epic image :
 α : 02 03 41.77
 δ : +30 00 18.3
 Energy band : 0.2–12.0 keV
 MOS1 : 3120 s
 MOS2 : 3120 s
 PN : 1160 s

Contour levels (counts) :
 2σ :2.363E-01 7σ :6.224E-01
 30σ 2.399E+00

Nearest ROSAT image
from Epic image center :
 Observation : 300359p
 Instrument : PSPCB
 α : 02 04 01.87
 δ : +29 56 23.7

Other ROSAT images :
None

XMM SSC
Apr 24 12:18:53 2019

⊙ Epic image contour
levels at 2, 7 and 30 σ

+ Detected Epic sources