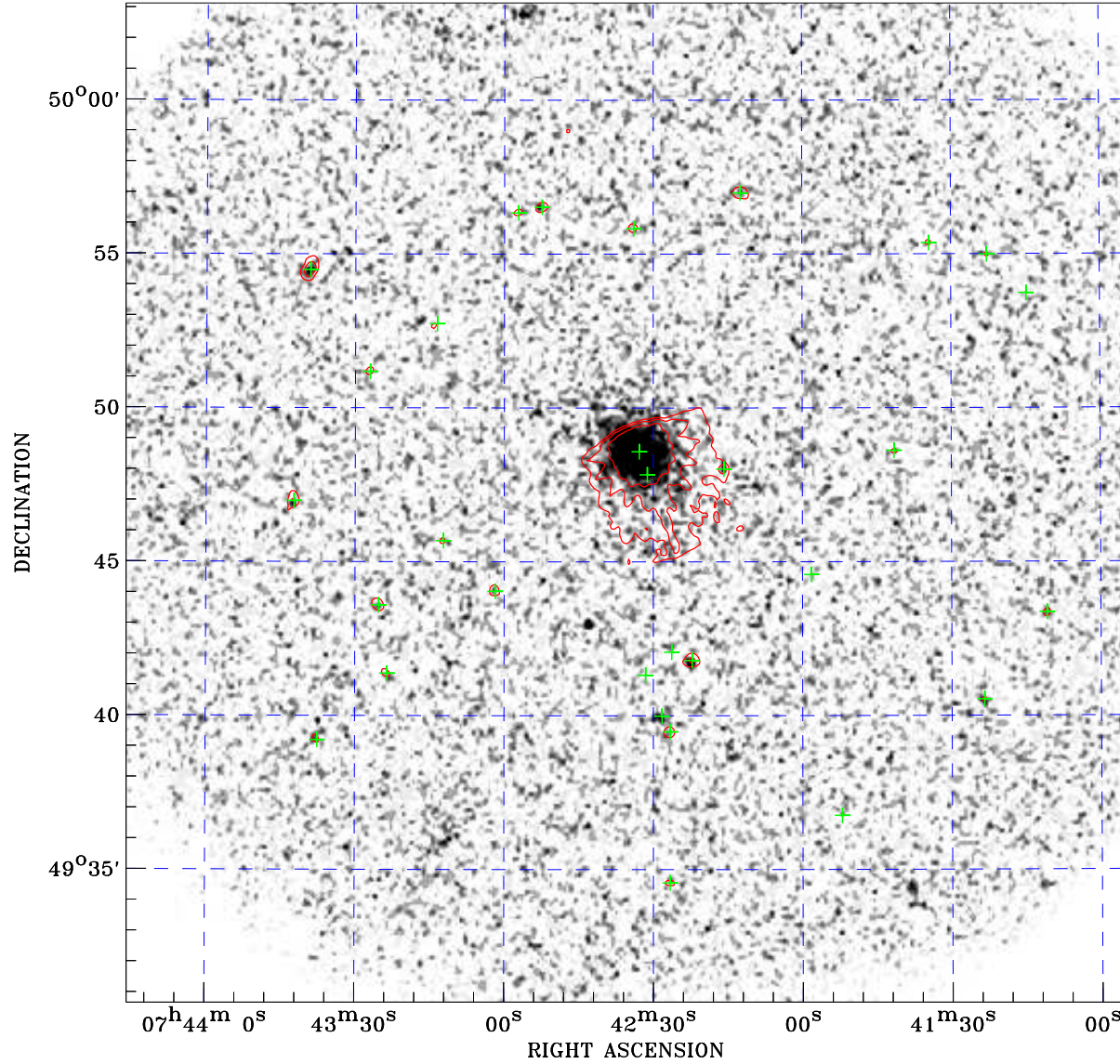



PDF XMM ROSAT image ACDS V10.0



ROSAT image gray scale (Log) :

 $\langle 7.184\text{E-}05$ $\rangle 2.609\text{E-}04$
(counts s⁻¹)

⊙ Epic image contour
levels at 2, 7 and 30 σ

+ Detected Epic sources

Principal Investigator :
Dr Luigi Gallo

XMM target name :
UGC 3973

Observation ID :
0400070401

Epic image :
 α : 07 42 35.55
 δ : +49 46 55.8
Energy band : 0.2–12.0 keV
MOS1 : 19848 s
MOS2 : 20063 s
PN : 19970 s

Contour levels (counts) :
2 σ :1.592E+00 7 σ :4.639E+00
30 σ :1.866E+01

Nearest ROSAT image
from Epic image center :
Observation : 702884h
Instrument : HRI
 α : 07 42 43.49
 δ : +49 46 59.7

Other ROSAT images :
None

XMM SSC
Apr 22 07:44:57 2019