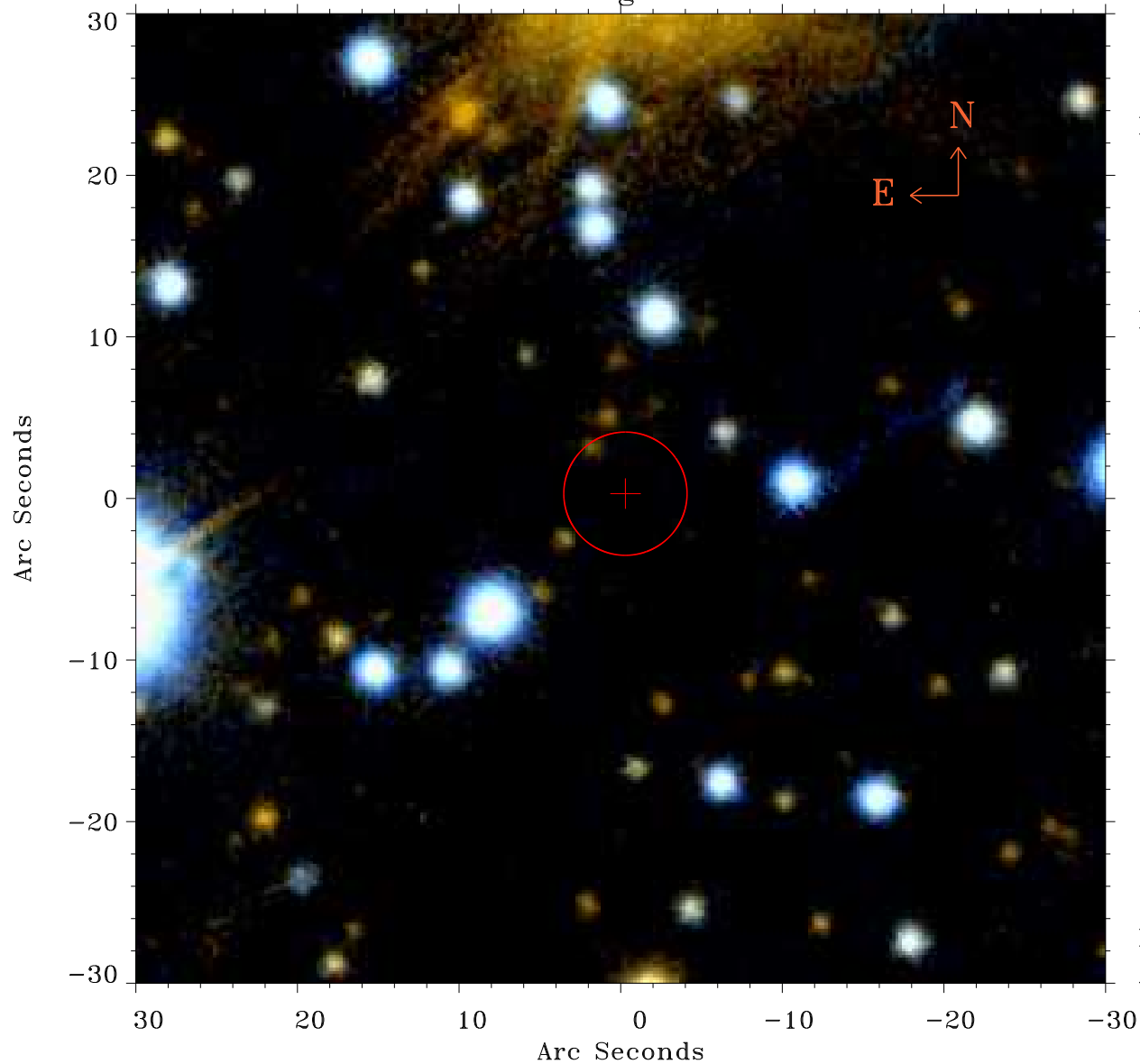


# EPIC source finding chart ACDS V10.0



Principal Investigator :

Dr Craig Heinke

XMM target name :

G359.1-0.5

OBS ID : 400340101

Source number : 53

X-ray coordinates :

$\alpha$  : 17 46 26.29

$\delta$  : -29 55 12.8

Center coordinates :

$\alpha$  : 17 46 26.29

$\delta$  : -29 55 12.9

Plate reference :

Origin : PanSTARRS-DR1

Color coding :

z band ●

(z+g)/2 ●

g band ●

Error:

R90 : 3.8 arsec

XMM SSC

Apr 30 04:10:28 2019