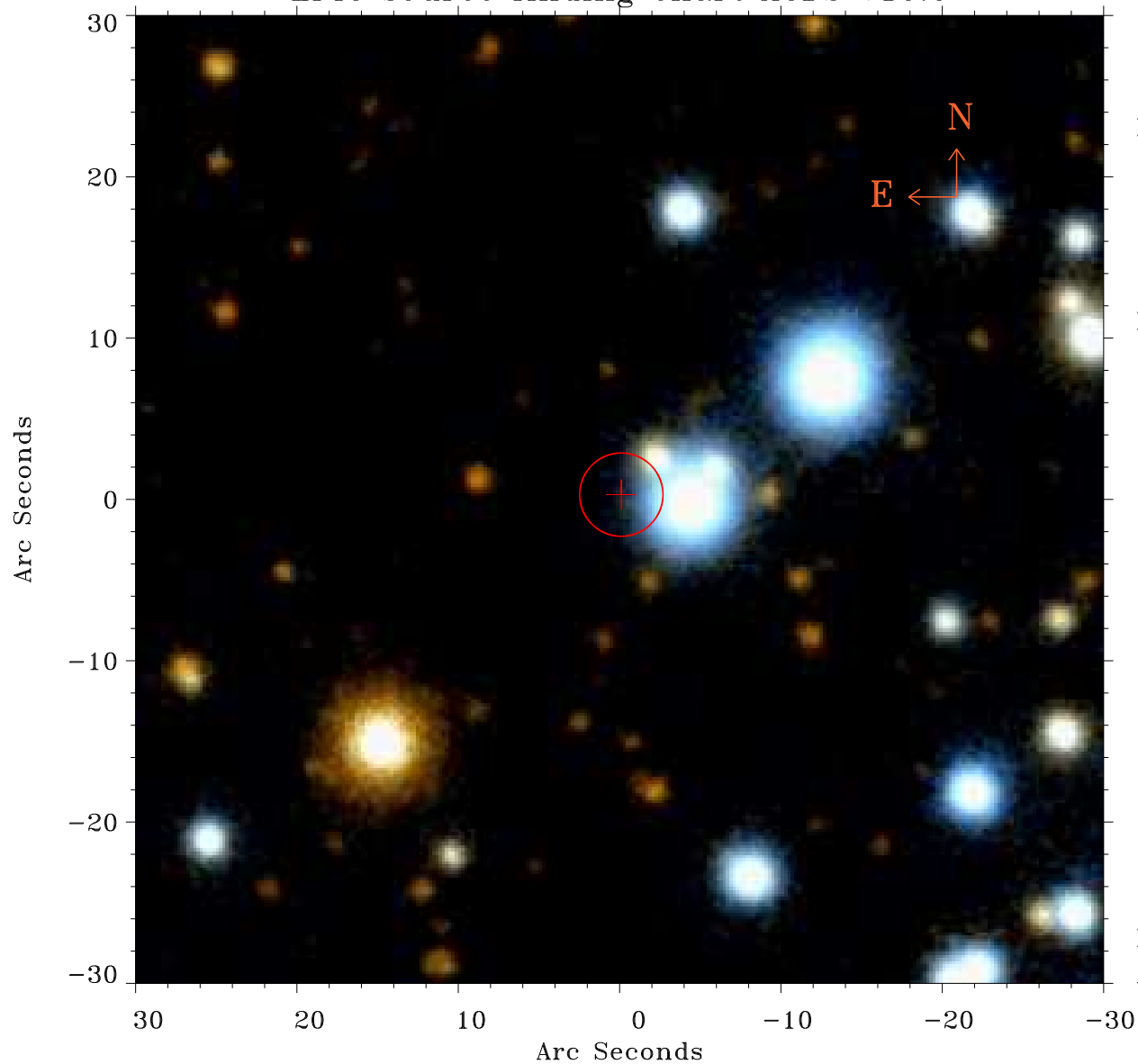


# EPIC source finding chart ACDS V10.0



Principal Investigator :

Dr Craig Heinke

XMM target name :

G359.1-0.5

OBS ID : 400340101

Source number : 57

X-ray coordinates :

$\alpha$  : 17 44 55.93

$\delta$  : -29 54 46.5

Center coordinates :

$\alpha$  : 17 44 55.92

$\delta$  : -29 54 46.6

Plate reference :

Origin : PanSTARRS-DR1

Color coding :

z band ●

(z+g)/2 ●

g band ●

Error:

R90 : 2.6 arsec

XMM SSC

Apr 30 03:49:11 2019