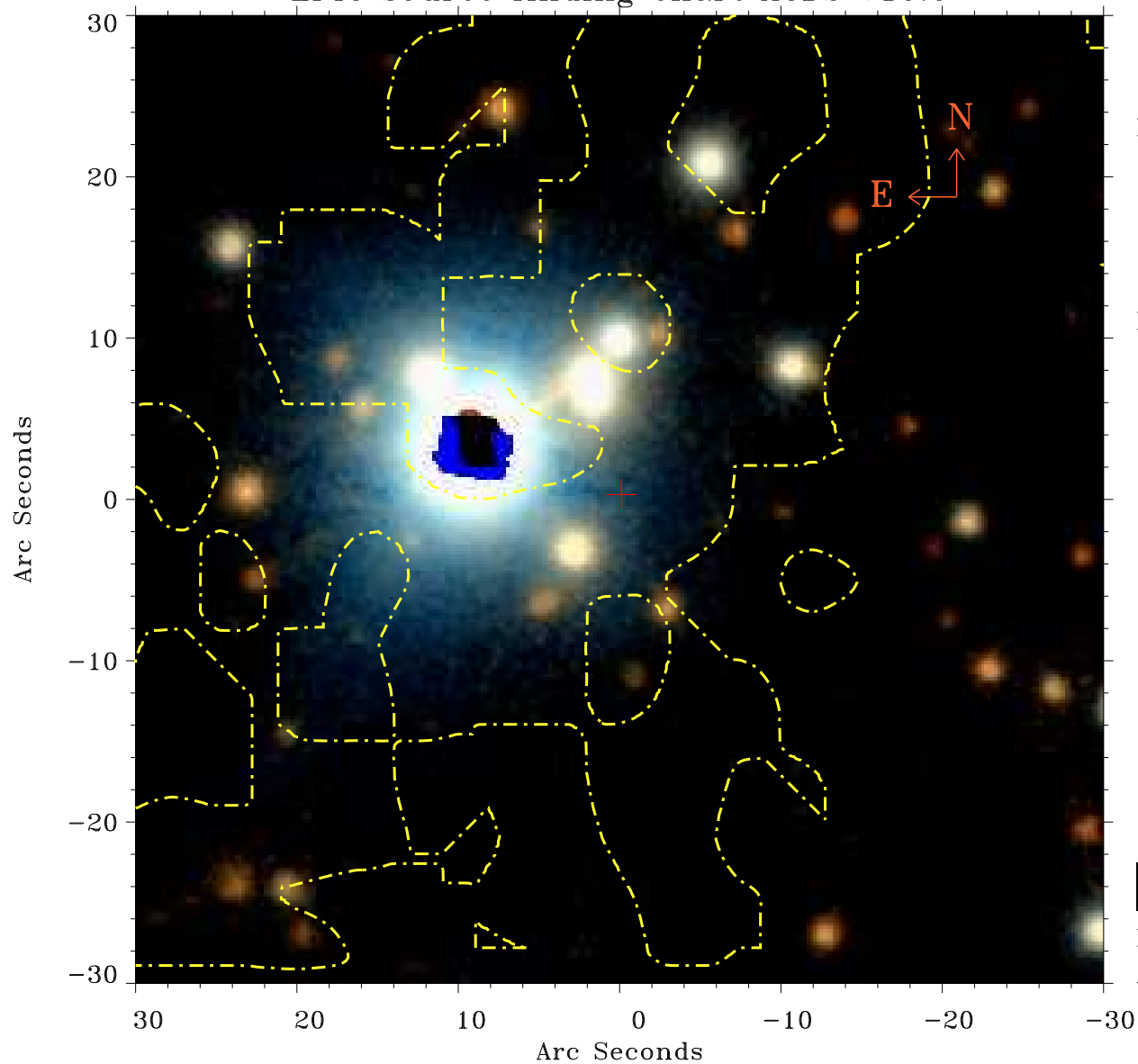


# EPIC source finding chart ACDS V10.0



Principal Investigator :

Dr Craig Heinke

XMM target name :

G359.1-0.5

OBS ID : 400340101

Source number : 69

X-ray coordinates :

$\alpha$  : 17 45 52.68

$\delta$  : -29 44 29.3

Center coordinates :

$\alpha$  : 17 45 52.68

$\delta$  : -29 44 29.4

Plate reference :

Origin : PanSTARRS-DR1

Color coding :

z band ●

(z+g)/2 ●

g band ●

Contour levels (counts) :



XMM SSC

Apr 30 04:04:57 2019