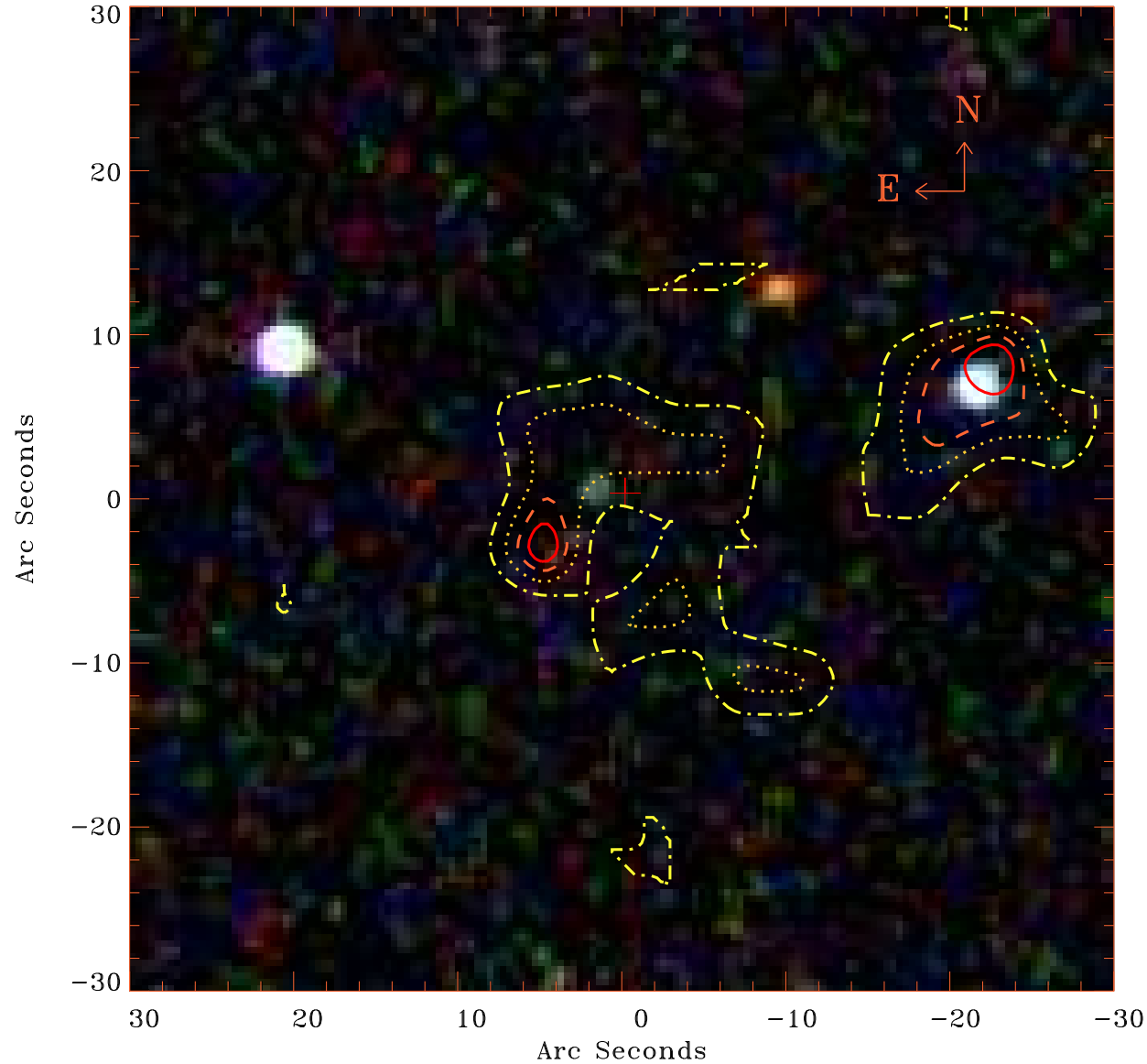


EPIC source finding chart V10.0



Principal Investigator :

Dr Junxian Wang

XMM target name :

SDSS J081102+500724

OBS ID : 401270401

Source number : 17

X-ray coordinates :

α : 08 10 29.67

δ : +50 00 58.6

Center coordinates :

α : 08 10 29.65

δ : +50 00 58.6

Plate reference :

Origin : SDSS

Color coding :

i band ●

r band ●

g band ●

Contour levels (counts) :

1.00E+00
2.64E+00

1.91E+00
3.20E+00

XMM SSC

Apr 26 12:48:27 2019