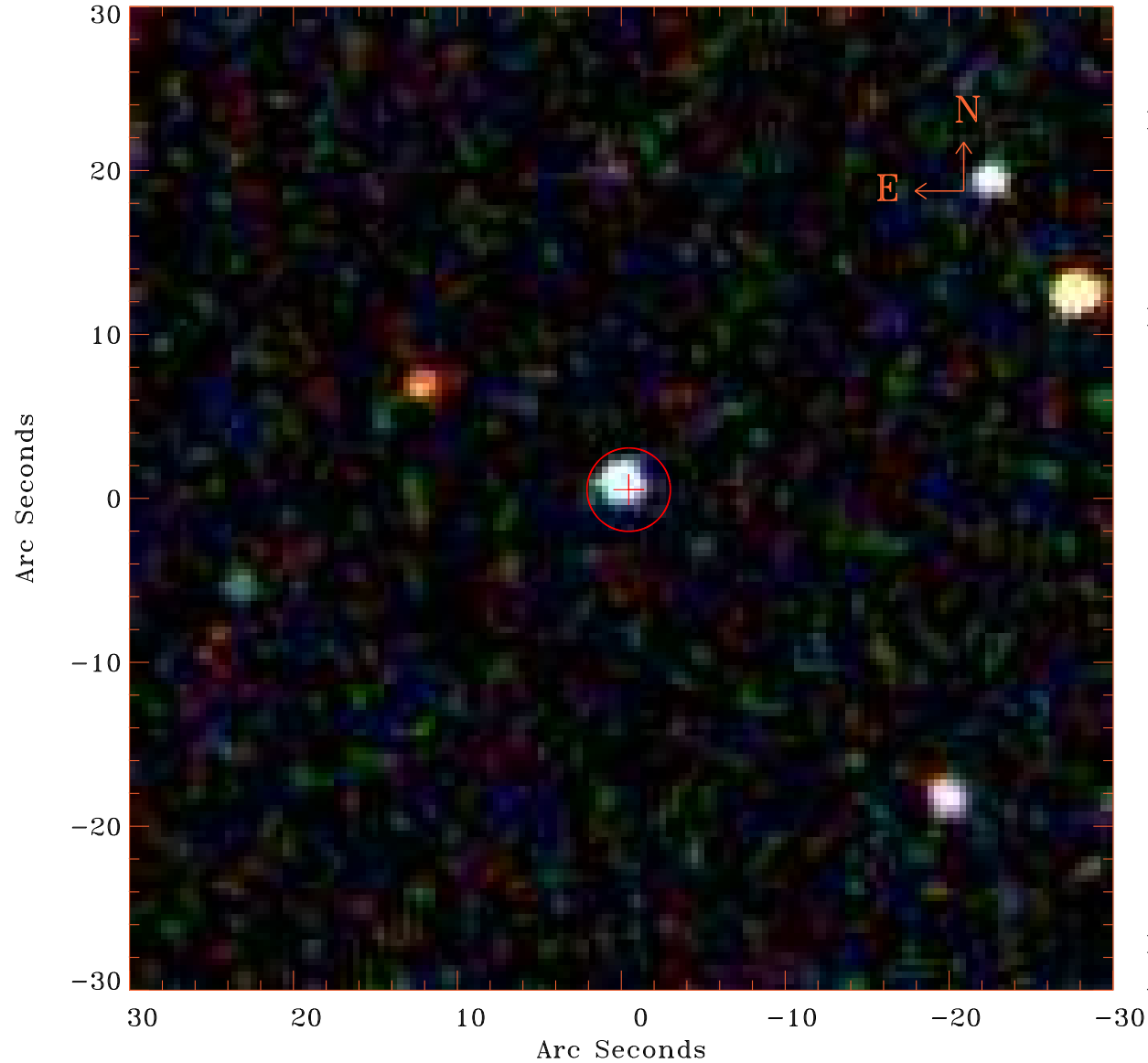


# EPIC source finding chart V10.0



Principal Investigator :

Dr Junxian Wang

XMM target name :

SDSS J081102+500724

OBS ID : 401270401

Source number : 27

X-ray coordinates :

$\alpha$  : 08 10 27.38

$\delta$  : +50 01 04.8

Center coordinates :

$\alpha$  : 08 10 27.39

$\delta$  : +50 01 04.6

Plate reference :

Origin : SDSS

Color coding :

i band ●

r band ●

g band ●

Error circle :

$R_{90}$  (") : 2.5

XMM SSC

Apr 26 12:48:06 2019