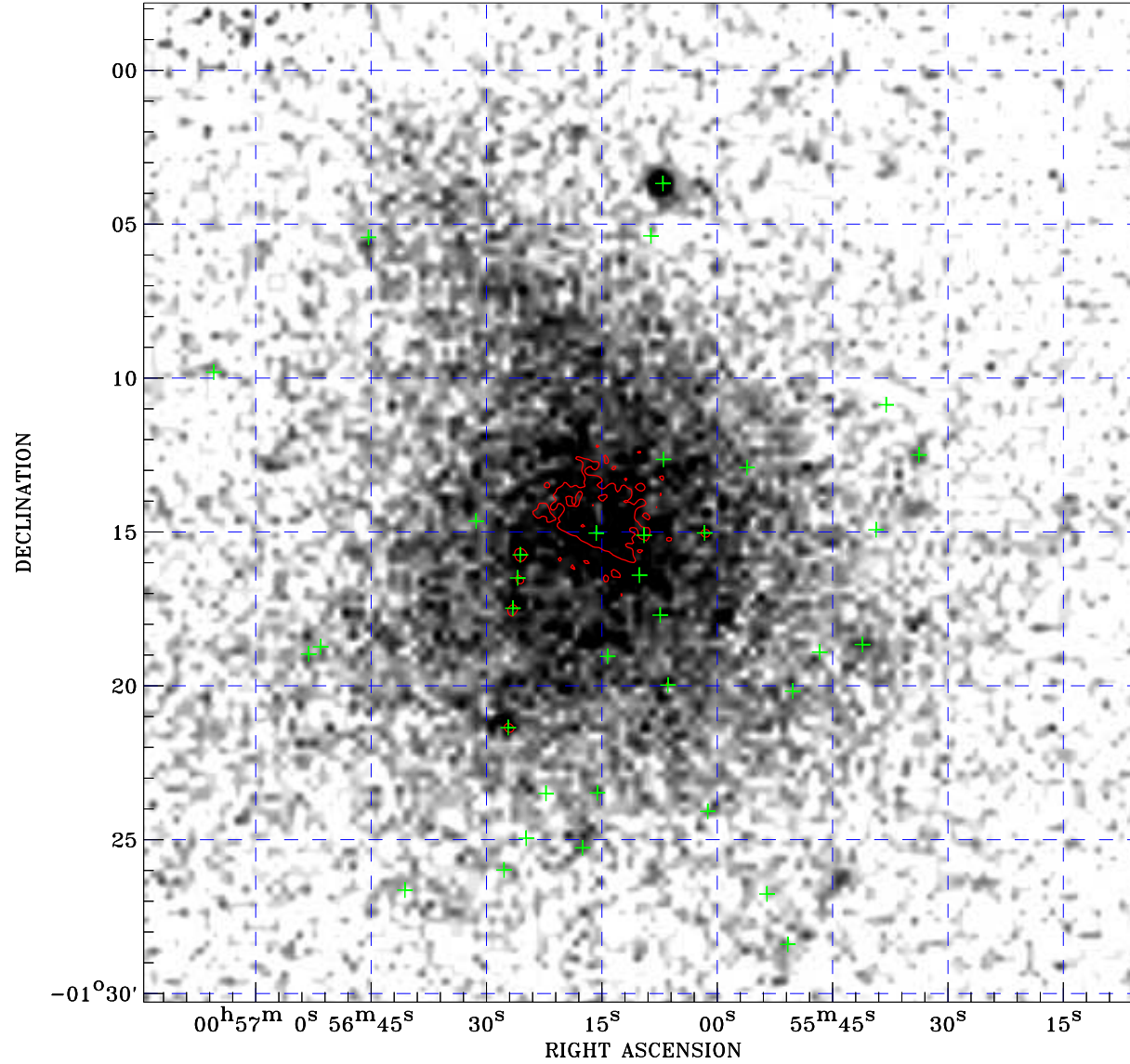



# PDF XMM ROSAT image ACDS V10.0



ROSAT image gray scale (Log) :  
  
 $\langle 1.176\text{E-}04$   $\rangle 7.098\text{E-}04$   
(counts  $\text{s}^{-1}$ )

⊙ Epic image contour  
levels at 2, 7 and  $30\sigma$

+ Detected Epic sources

Principal Investigator :  
Dr Thomas Reiprich

XMM target name :  
A0119

Observation ID :  
0402190501

Epic image :  
 $\alpha$  : 00 56 09.62  
 $\delta$  : -01 14 02.7  
Energy band : 0.2–12.0 keV  
MOS1 : 18702 s  
MOS2 : 19123 s  
PN : 13281 s

Contour levels (counts) :  
 $2\sigma$  :3.160E+01  $7\sigma$  :7.407E+01  
 $30\sigma$  2.694E+02

Nearest ROSAT image  
from Epic image center :  
Observation : 800251p  
Instrument : PSPCB  
 $\alpha$  : 00 56 28.82  
 $\delta$  : -01 18 00.2

Other ROSAT images :  
None

XMM SSC  
Apr 28 22:07:12 2019