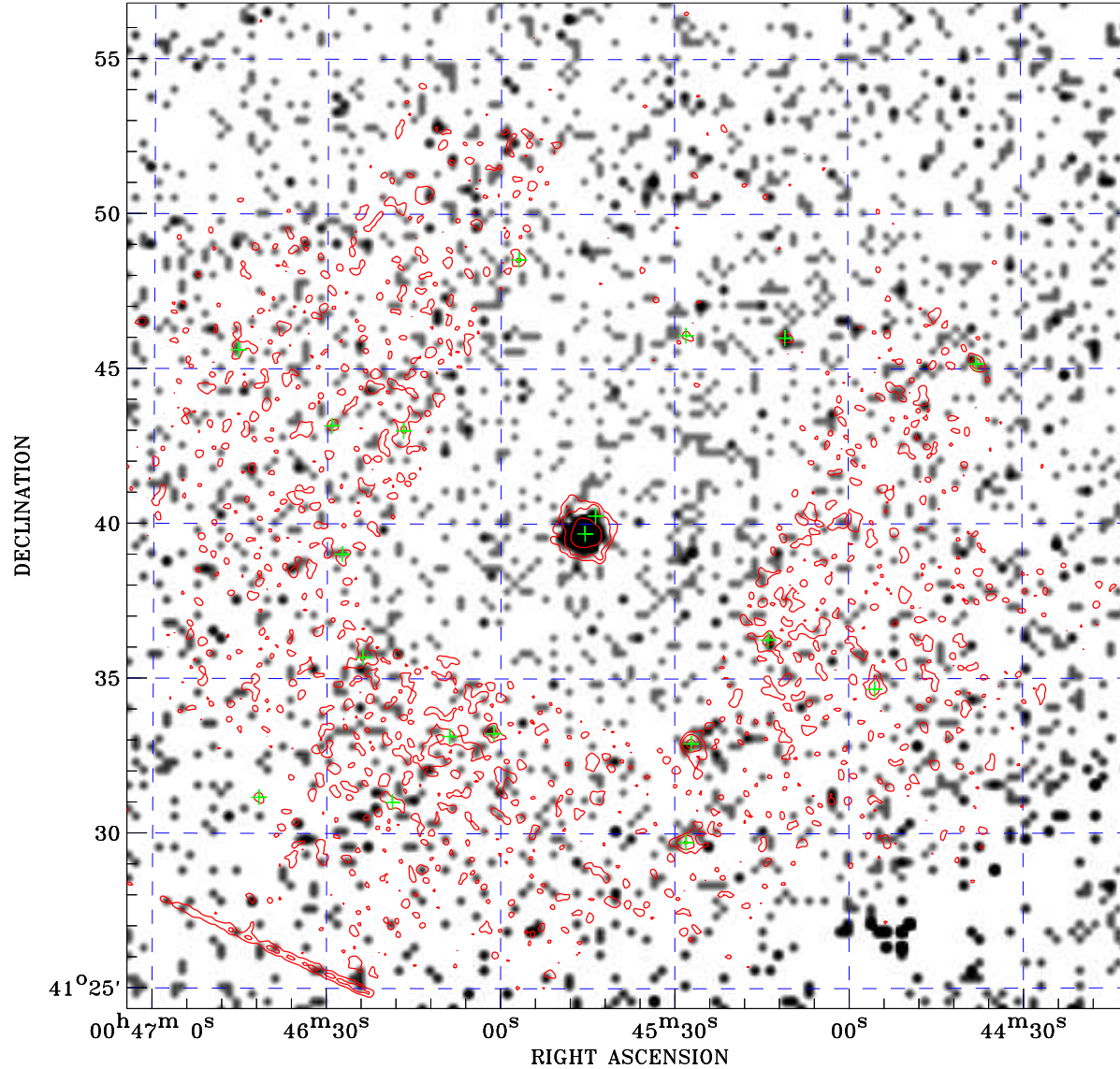



# PDF XMM ROSAT image ACDS V10.0



ROSAT image gray scale (Log) :  
  
 $\langle 8.602\text{E-}05$   $\rangle 6.937\text{E-}04$   
 (counts s<sup>-1</sup>)

⊙ Epic image contour  
 levels at 2, 7 and 30 $\sigma$

+ Detected Epic sources

Principal Investigator :  
 Dr Albert Kong

XMM target name :  
 Bo375

Observation ID :  
 0403530501

Epic image :  
 $\alpha$  : 00 45 37.74  
 $\delta$  : +41 40 35.7  
 Energy band : 0.2–12.0 keV  
 MOS1 : 8889 s  
 MOS2 : 9045 s  
 PN : 0 s

Contour levels (counts) :  
 2 $\sigma$  :3.974E-01 7 $\sigma$  :9.980E-01  
 30 $\sigma$  :3.761E+00

Nearest ROSAT image  
 from Epic image center :  
 Observation : 600351p  
 Instrument : PSPCB  
 $\alpha$  : 00 45 44.90  
 $\delta$  : +41 43 11.7

Other ROSAT images :  
 None

XMM SSC  
 Apr 29 20:48:38 2019