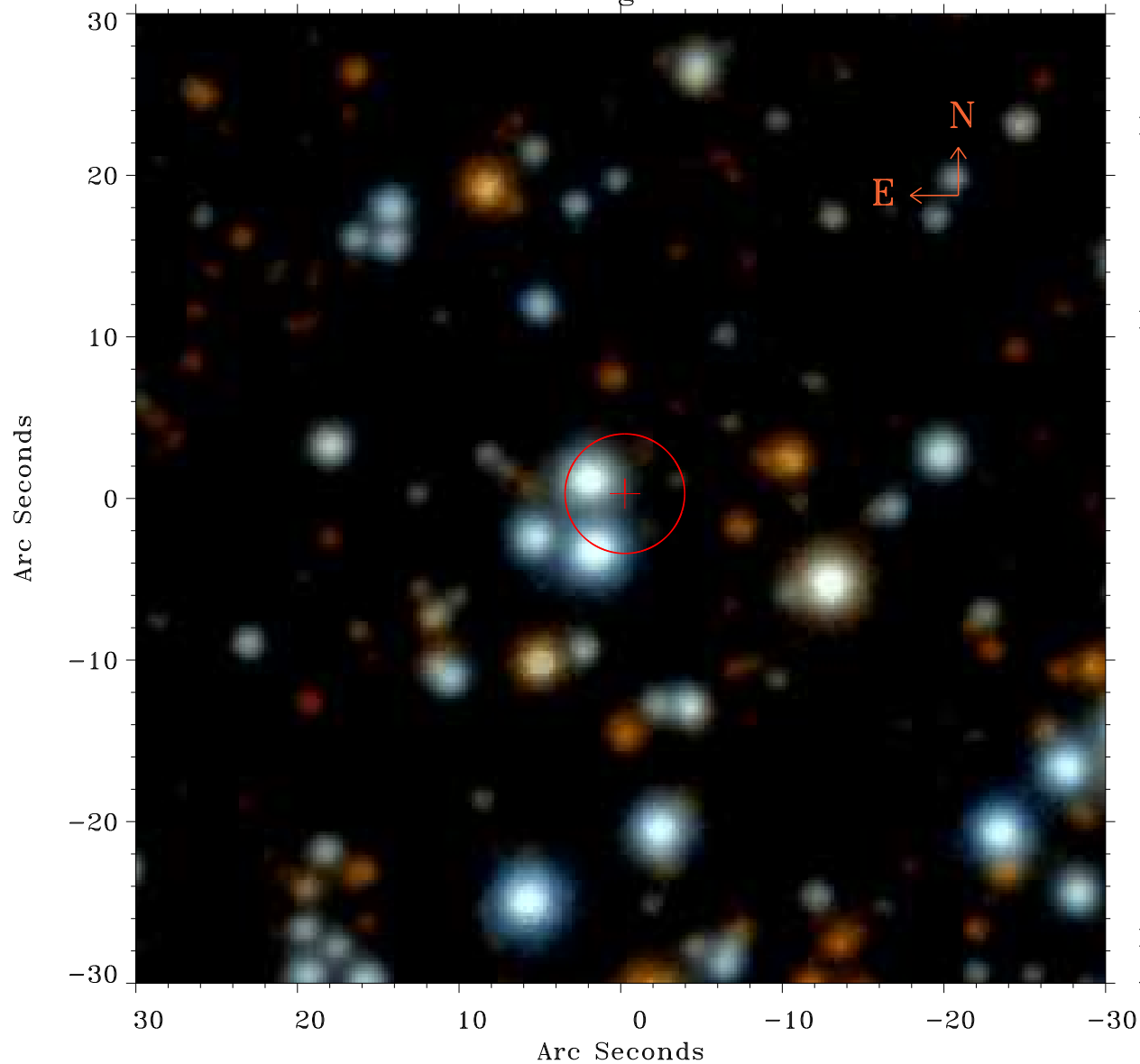


# EPIC source finding chart ACDS V10.0



Principal Investigator :

Dr Gerd Puehlhofer

XMM target name :

HESS J1804-216-NE

OBS ID : 405750201

Source number : 59

X-ray coordinates :

$\alpha$  : 18 04 50.27

$\delta$  : -21 11 57.7

Center coordinates :

$\alpha$  : 18 04 50.28

$\delta$  : -21 11 57.8

Plate reference :

Origin : PanSTARRS-DR1

Color coding :

z band ●

(z+g)/2 ●

g band ●

Error:

R90 : 3.7 arcsec

XMM SSC

Apr 25 23:36:25 2019