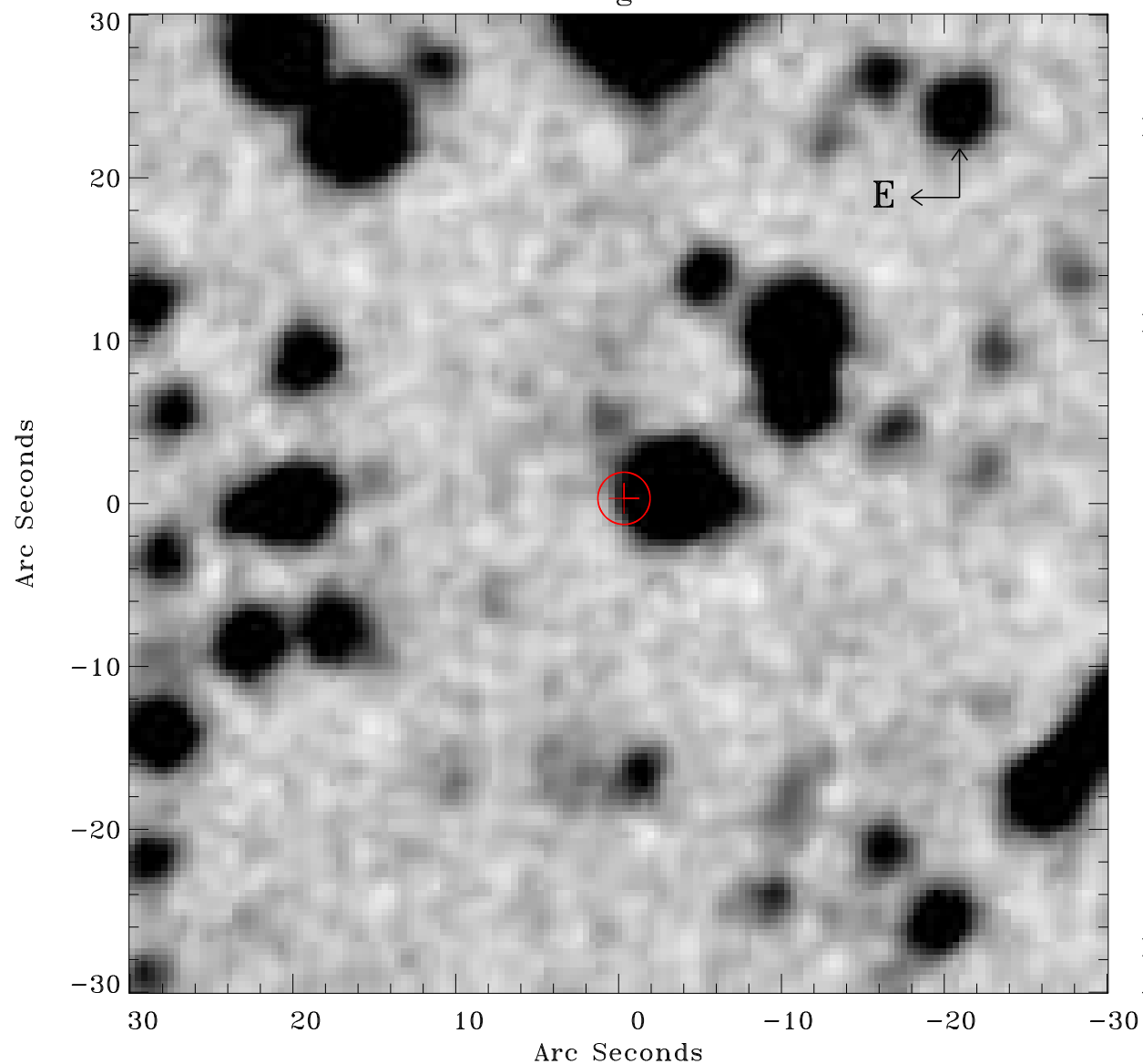


# EPIC source finding chart ACDS V10.0



Principal Investigator :

Dr Gavin Rowell

XMM target name :

HESS J1614-518 Nort

OBS ID : 406650101

Source number : 24

X-ray coordinates :

$\alpha$  : 16 14 58.13

$\delta$  : -51 55 50.9

Center coordinates :

$\alpha$  : 16 14 58.12

$\delta$  : -51 55 50.8

Plate reference :

Origin : CDS HIPs Network

Plate : MAMA srcj

Pixel : 0.40 "/pix

Error circle :

$R_{90}$  (") : 1.6

XMM SSC

Apr 21 06:17:04 2019