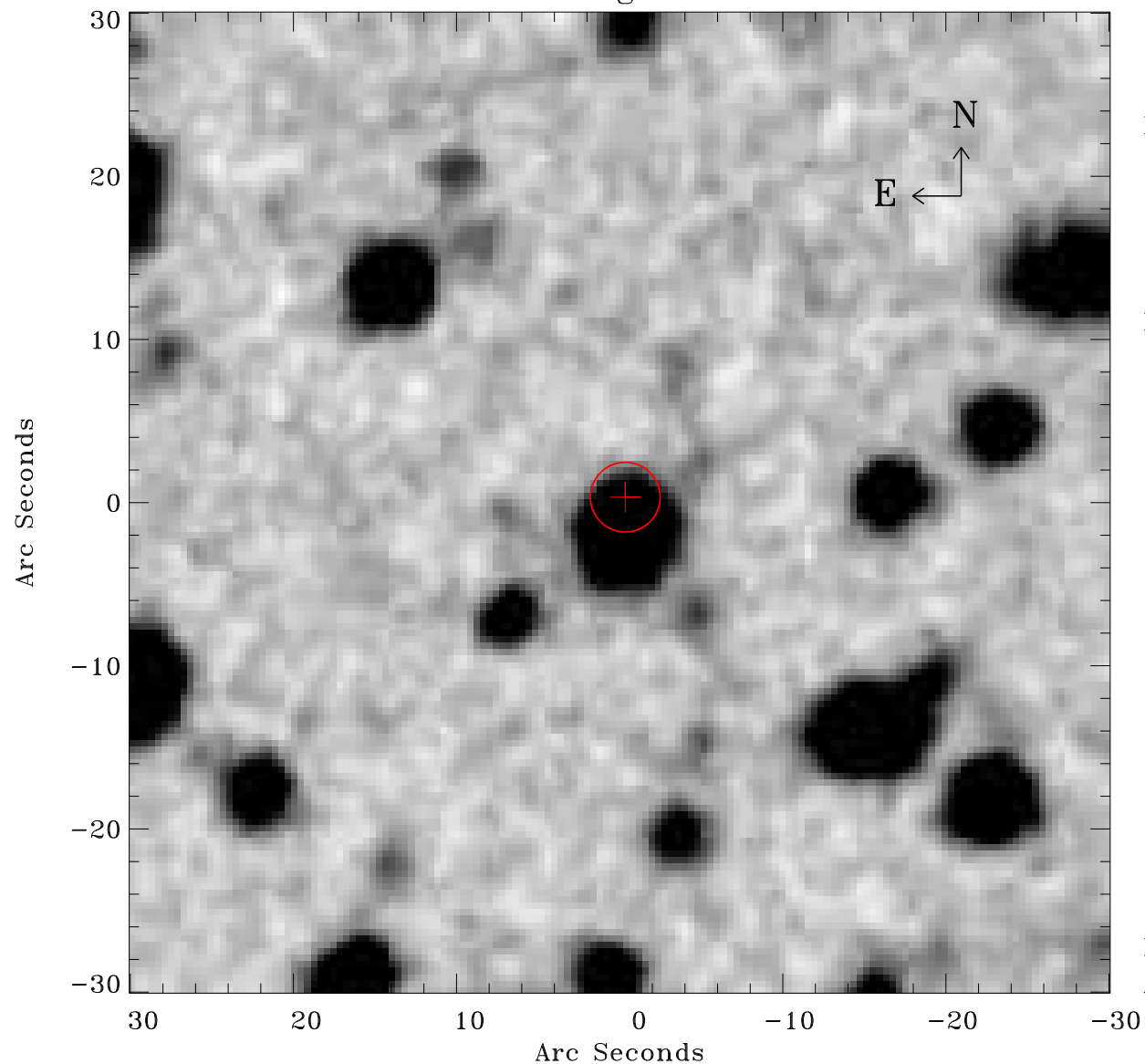


# EPIC source finding chart ACDS V10.0



Principal Investigator :

Dr Gavin Rowell

XMM target name :

HESS J1614-518 Nort

OBS ID : 406650101

Source number : 36

X-ray coordinates :

$\alpha$  : 16 15 25.16

$\delta$  : -51 48 55.3

Center coordinates :

$\alpha$  : 16 15 25.16

$\delta$  : -51 48 55.2

Plate reference :

Origin : CDS HIPs Network

Plate : MAMA srcj

Pixel : 0.40 "/pix

Error circle :

$R_{90}$  (") : 2.1

XMM SSC

Apr 21 06:17:58 2019