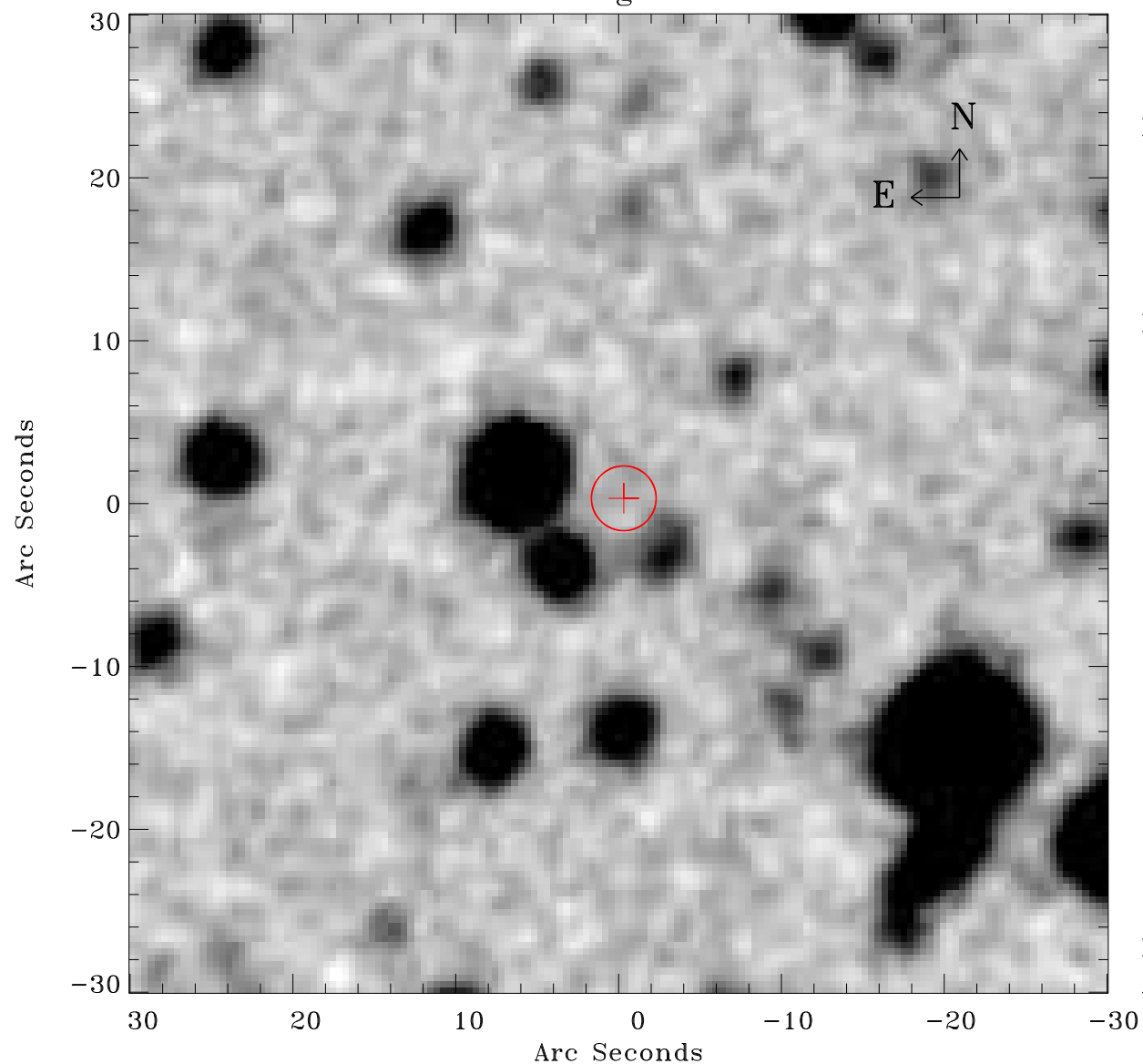


# EPIC source finding chart ACDS V10.0



Principal Investigator :

Dr Gavin Rowell

XMM target name :

HESS J1614-518 Nort

OBS ID : 406650101

Source number : 68

X-ray coordinates :

$\alpha$  : 16 14 51.77

$\delta$  : -51 40 39.0

Center coordinates :

$\alpha$  : 16 14 51.76

$\delta$  : -51 40 38.9

Plate reference :

Origin : CDS HIPs Network

Plate : MAMA srcj

Pixel : 0.40 "/pix

Error circle :

$R_{90}$  (") : 2.0

XMM SSC

Apr 21 06:16:51 2019