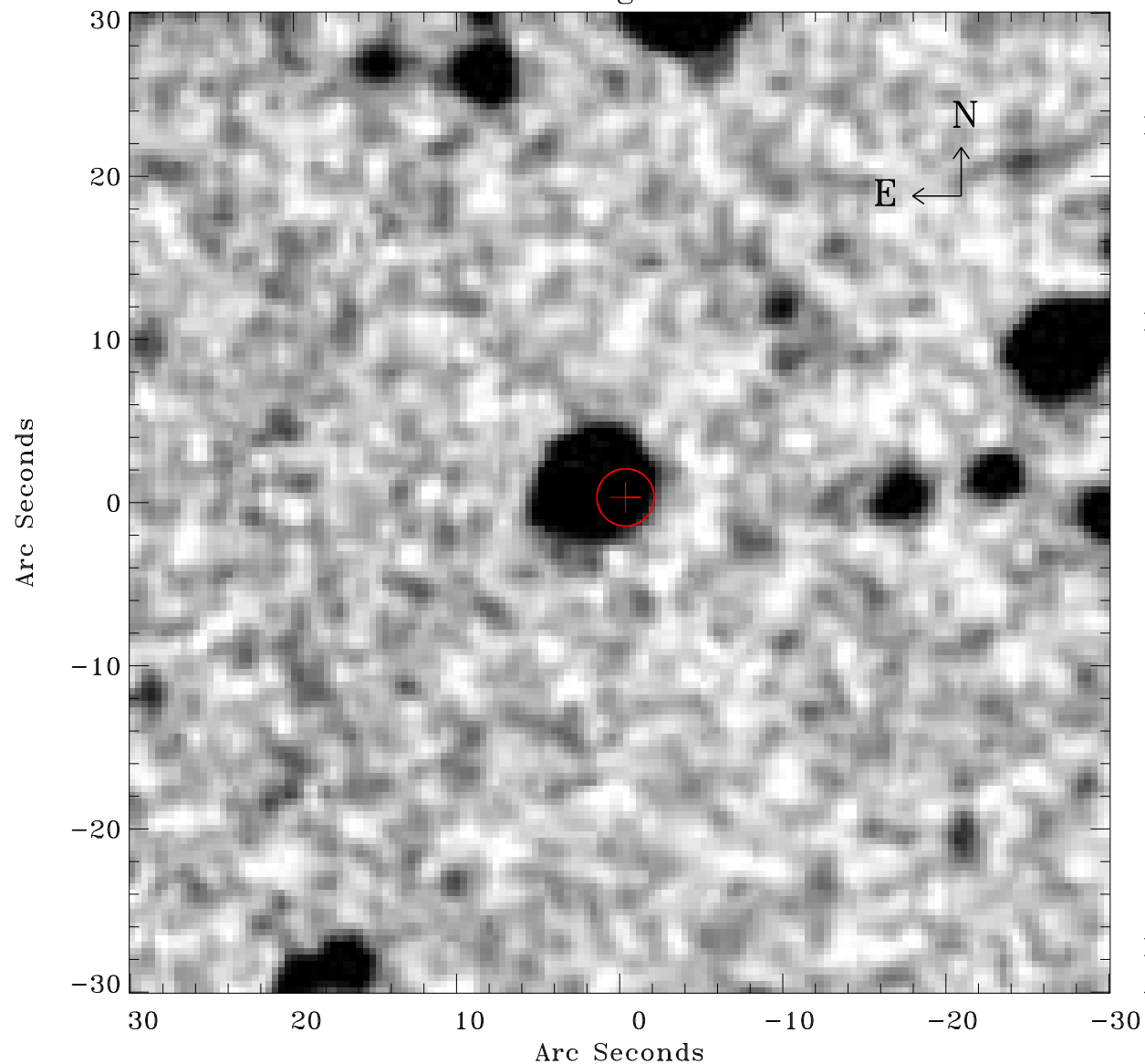


# EPIC source finding chart ACDS V10.0



Principal Investigator :

Mr Edward Cackett

XMM target name :

AX J1704.7-4109

OBS ID : 406750301

Source number : 9

X-ray coordinates :

$\alpha$  : 17 04 52.10

$\delta$  : -41 03 33.2

Center coordinates :

$\alpha$  : 17 04 52.10

$\delta$  : -41 03 33.2

Plate reference :

Origin : CDS HIPs Network

Plate : MAMA srcj

Pixel : 0.40 "/pix

Error circle :

$R_{90}$  (") : 1.7

XMM SSC

Apr 22 13:54:13 2019