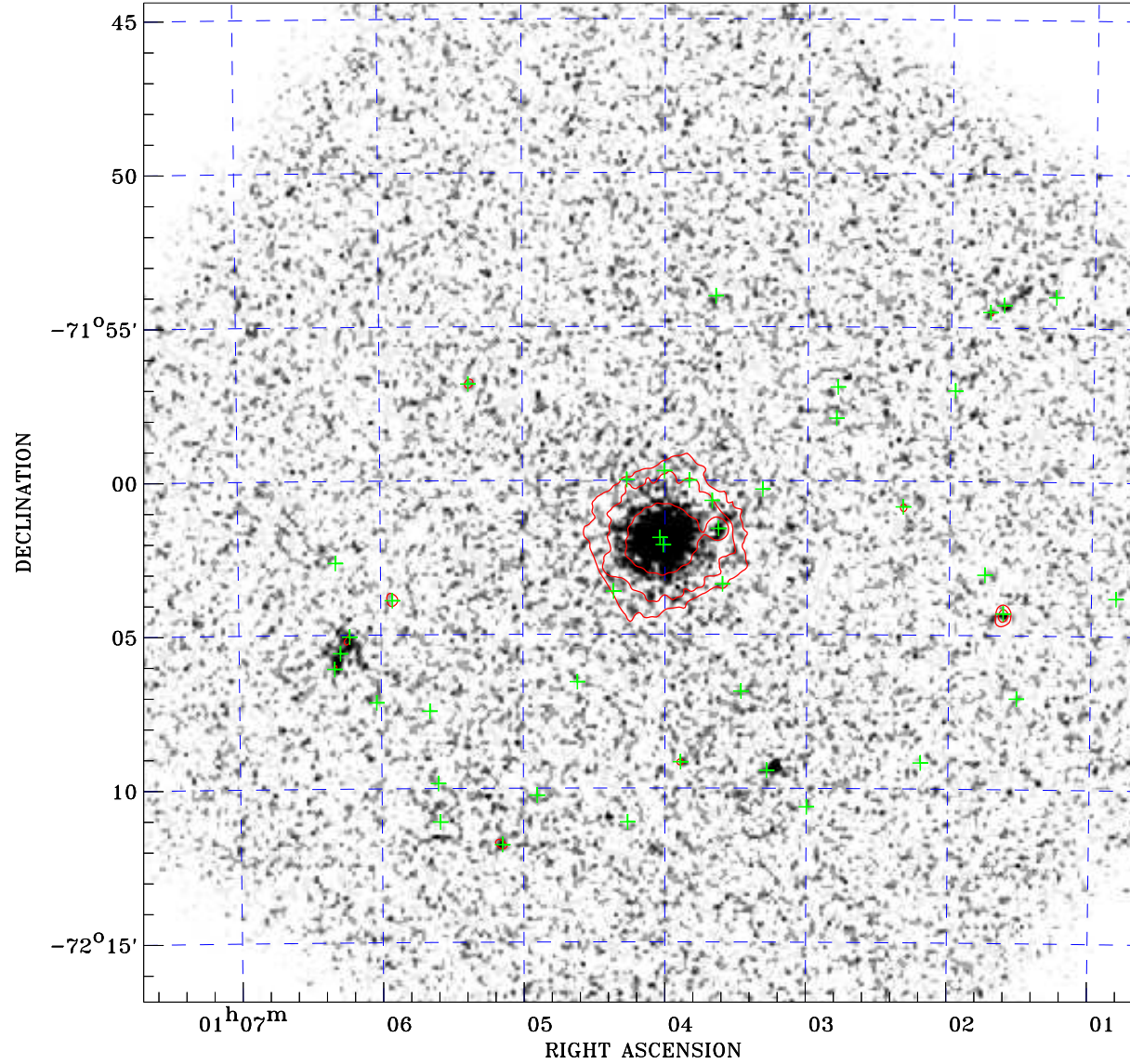



PDF XMM ROSAT image ACDS V10.0



ROSAT image gray scale (Log) :

 $\langle 8.425\text{E-}05$ $\rangle 3.059\text{E-}04$
 (counts s⁻¹)

⊙ Epic image contour
 levels at 2, 7 and 30 σ

+ Detected Epic sources

Principal Investigator :
 Dr Fred Jansen XMM-Newton MM

XMM target name :
 1ES0102-72 off-patc

Observation ID :
 0412983401

Epic image :
 α : 01 04 09.18
 δ : -72 00 43.5
 Energy band : 0.2-12.0 keV
 MOS1 : 41546 s
 MOS2 : 42016 s
 PN : 43031 s

Contour levels (counts) :
 2 σ :4.959E+00 7 σ :1.551E+01
 30 σ 6.404E+01

Nearest ROSAT image
 from Epic image center :
 Observation : 500003h
 Instrument : HRI
 α : 01 04 23.12
 δ : -72 03 24.2

Other ROSAT images :
 None

XMM SSC
 Apr 24 15:12:33 2019