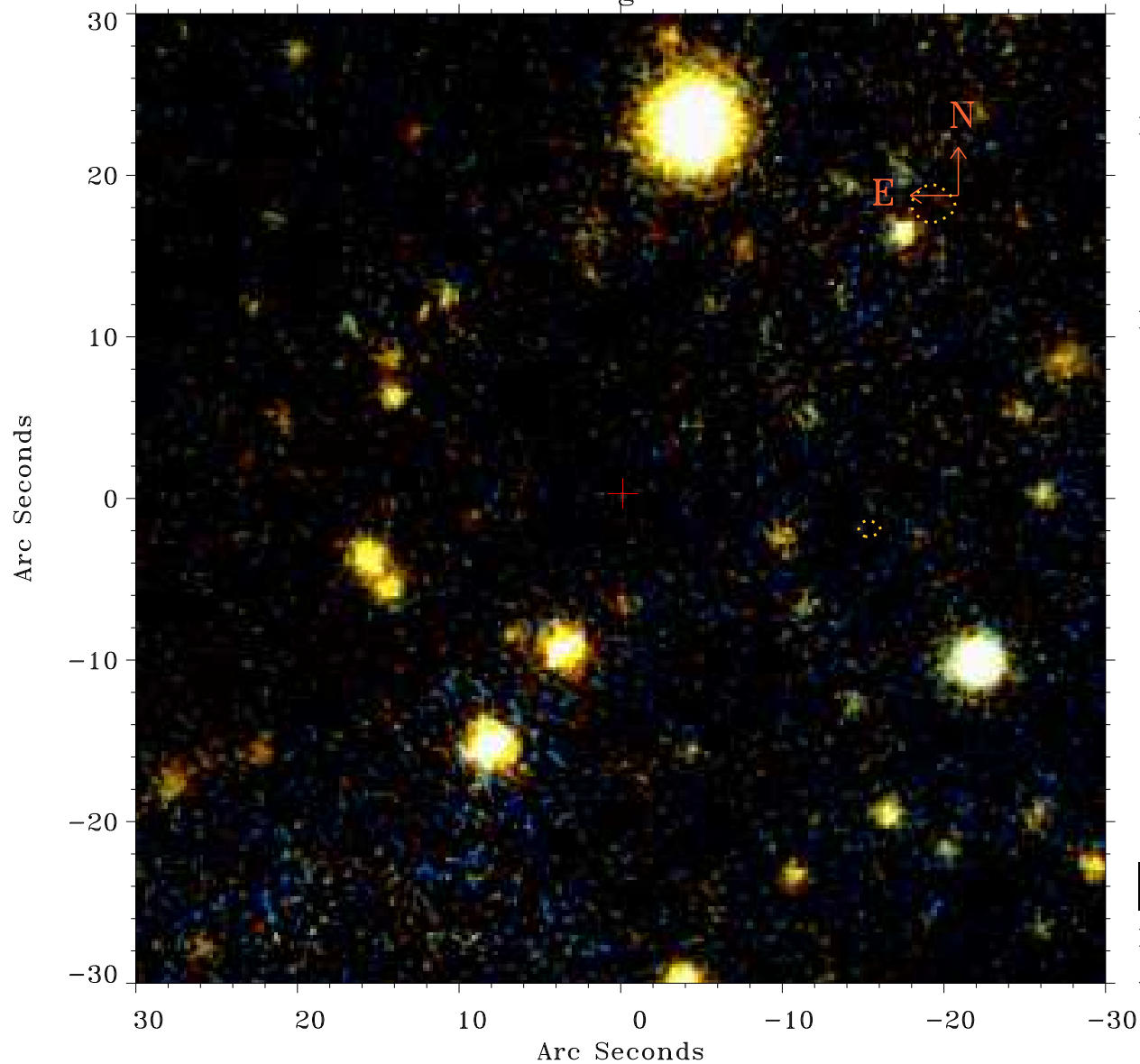


# EPIC source finding chart ACDS V10.0



Principal Investigator :  
Dr G. Randall Gladstone

XMM target name :  
Jupiter

OBS ID : 413780101  
Source number : 6

X-ray coordinates :  
 $\alpha$  : 17 04 47.56  
 $\delta$  : -22 05 38.9

Center coordinates :  
 $\alpha$  : 17 04 47.56  
 $\delta$  : -22 05 39.0

Plate reference :  
Origin : PanSTARRS-DR1

Color coding :  
z band ●  
(z+g)/2 ●  
g band ●

Contour levels (counts) :  
1.00E+00 1.56E+01  
6.17E+01 1.41E+02

XMM SSC  
Apr 23 04:17:41 2019