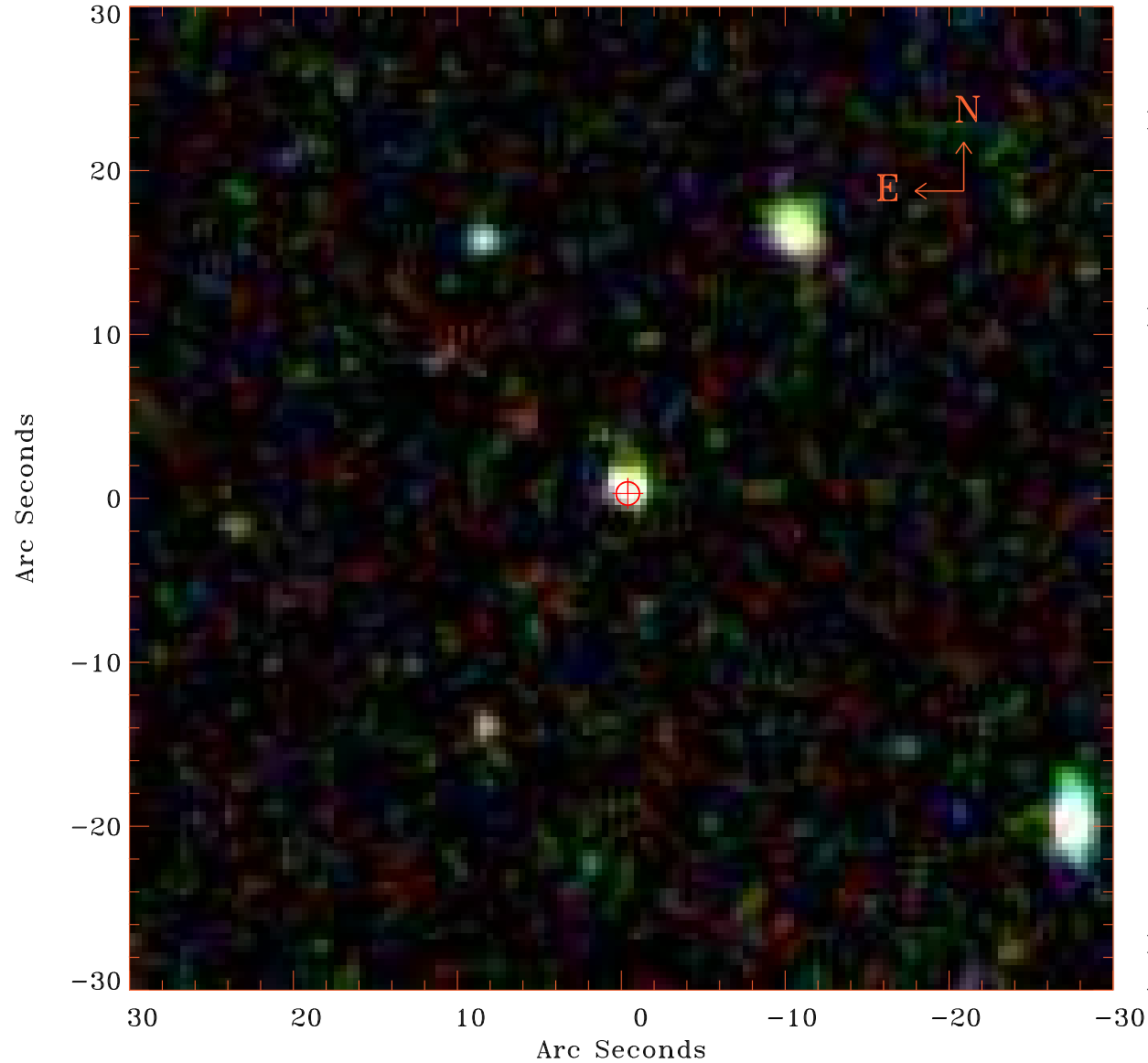


# EPIC source finding chart V10.0



Principal Investigator :  
Dr Arvind Parmar XMM-Newton MM

XMM target name :  
3C 273

OBS ID : 414190301  
Source number : 2

X-ray coordinates :  
 $\alpha$  : 12 29 33.74  
 $\delta$  : +01 58 10.3

Center coordinates :  
 $\alpha$  : 12 29 33.74  
 $\delta$  : +01 58 10.4

Plate reference :  
Origin : SDSS

Color coding :  
i band ●  
r band ●  
g band ●

Error circle :  
 $R_{90}$  (") : 0.7

XMM SSC  
Apr 29 14:44:41 2019