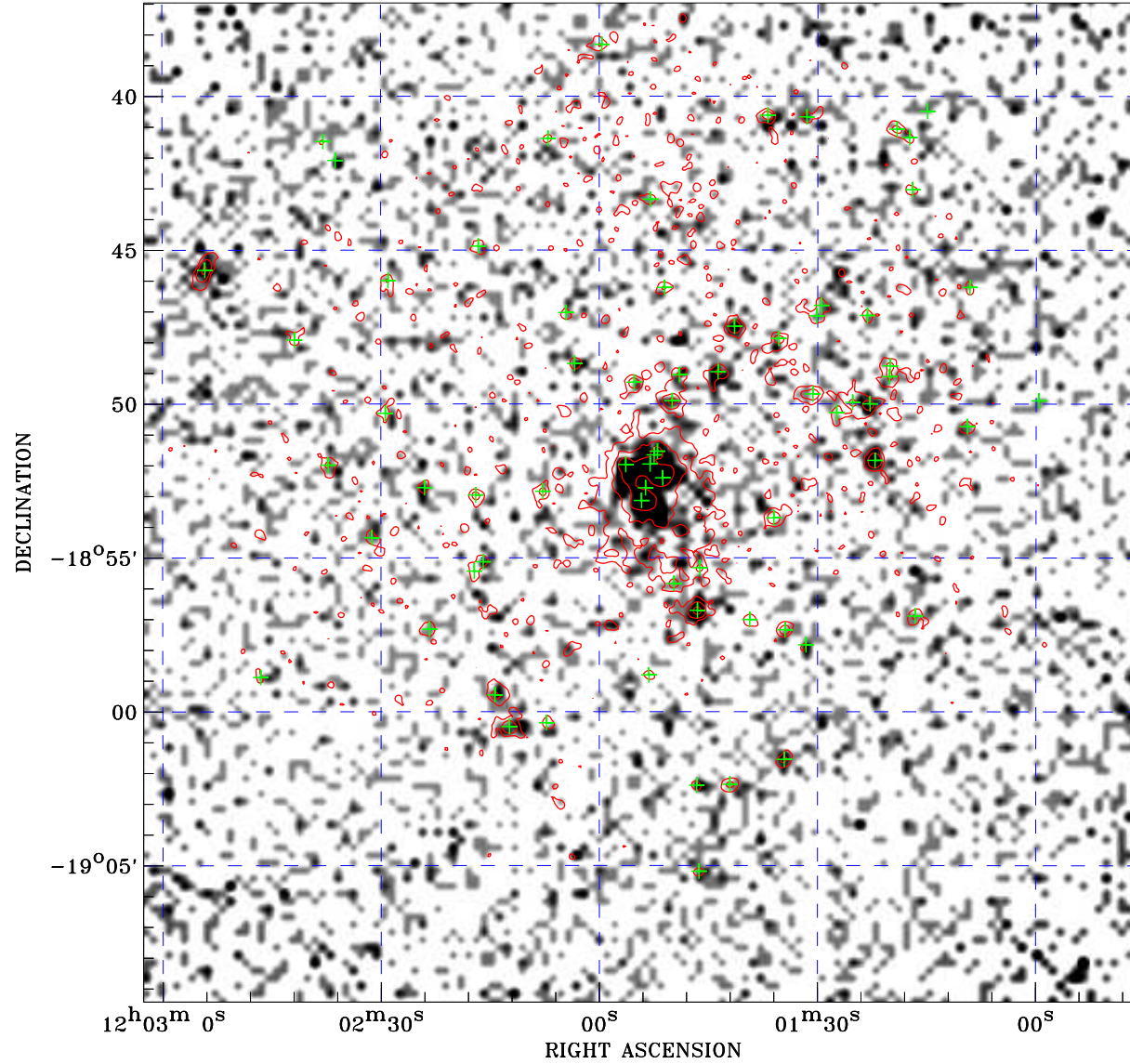



PDF XMM ROSAT image ACDS V10.0



ROSAT image gray scale (Log) :

 $\langle 9.042\text{E}-05$ $\rangle 6.277\text{E}-04$
 (counts s⁻¹)

⊙ Epic image contour
 levels at 2, 7 and 30 σ

+ Detected Epic sources

Principal Investigator :
 Dr Hua Feng

XMM target name :
 The Antennae

Observation ID :
 0500070201

Epic image :
 α : 12 01 53.96
 δ : -18 53 12.3
 Energy band : 0.2-12.0 keV
 MOS1 : 12347 s
 MOS2 : 12529 s
 PN : 9260 s

Contour levels (counts) :
 2 σ :1.140E+00 7 σ :2.660E+00
 30 σ :9.653E+00

Nearest ROSAT image
 from Epic image center :
 Observation : 600468p
 Instrument : PSPCB
 α : 12 02 07.90
 δ : -18 55 48.2

Other ROSAT images :
 None

XMM SSC
 Apr 26 02:45:43 2019