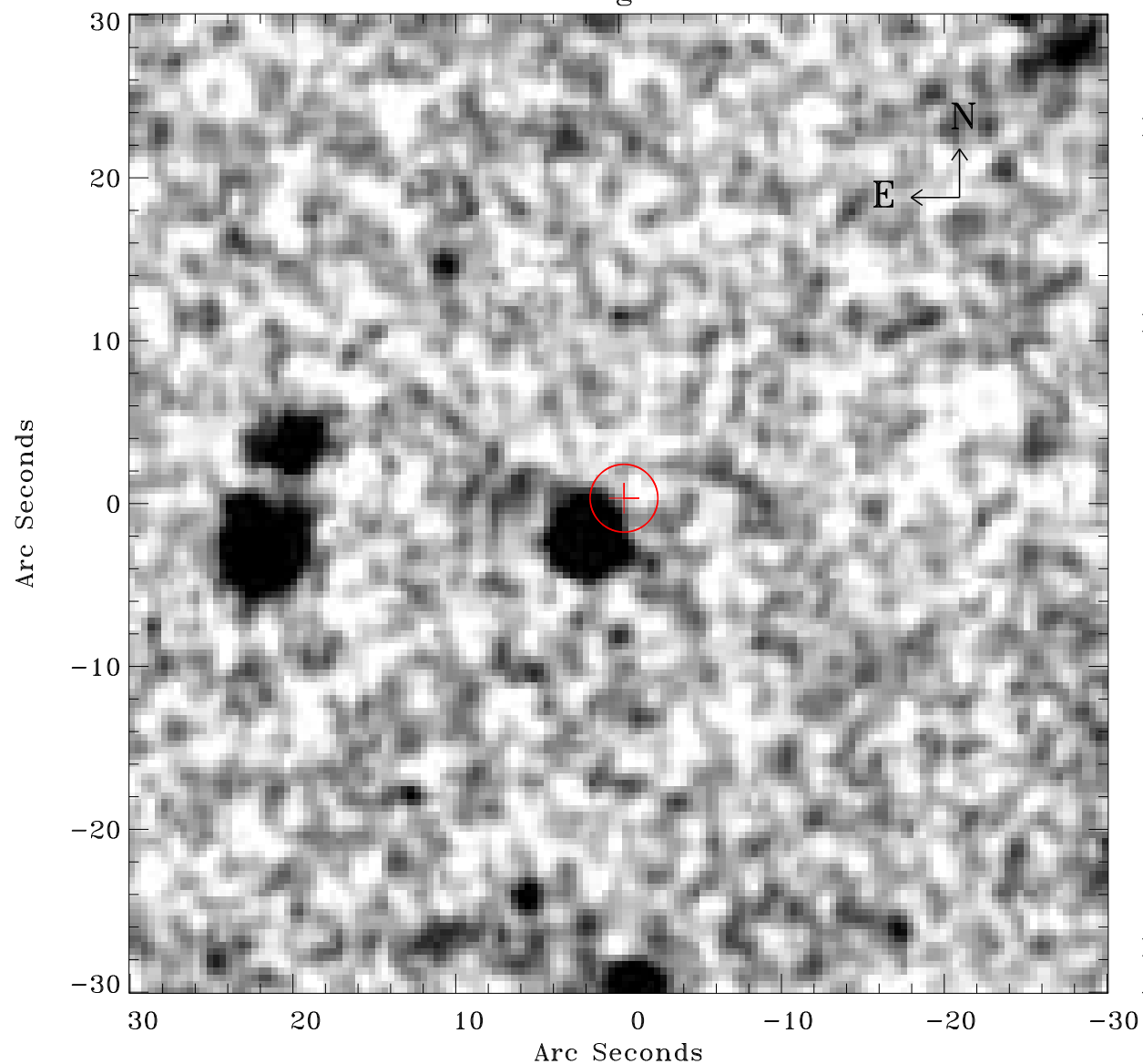


# EPIC source finding chart ACDS V10.0



Principal Investigator :

Mr Marco Ajello

XMM target name :

ESO 201-IG 004

OBS ID : 501210401

Source number : 18

X-ray coordinates :

$\alpha$  : 03 49 08.82

$\delta$  : -50 24 13.6

Center coordinates :

$\alpha$  : 03 49 08.81

$\delta$  : -50 24 13.5

Plate reference :

Origin : CDS HIPs Network

Plate : MAMA srcj

Pixel : 0.40 "/pix

Error circle :

$R_{90}$  (") : 2.1

XMM SSC

Apr 18 00:02:52 2019