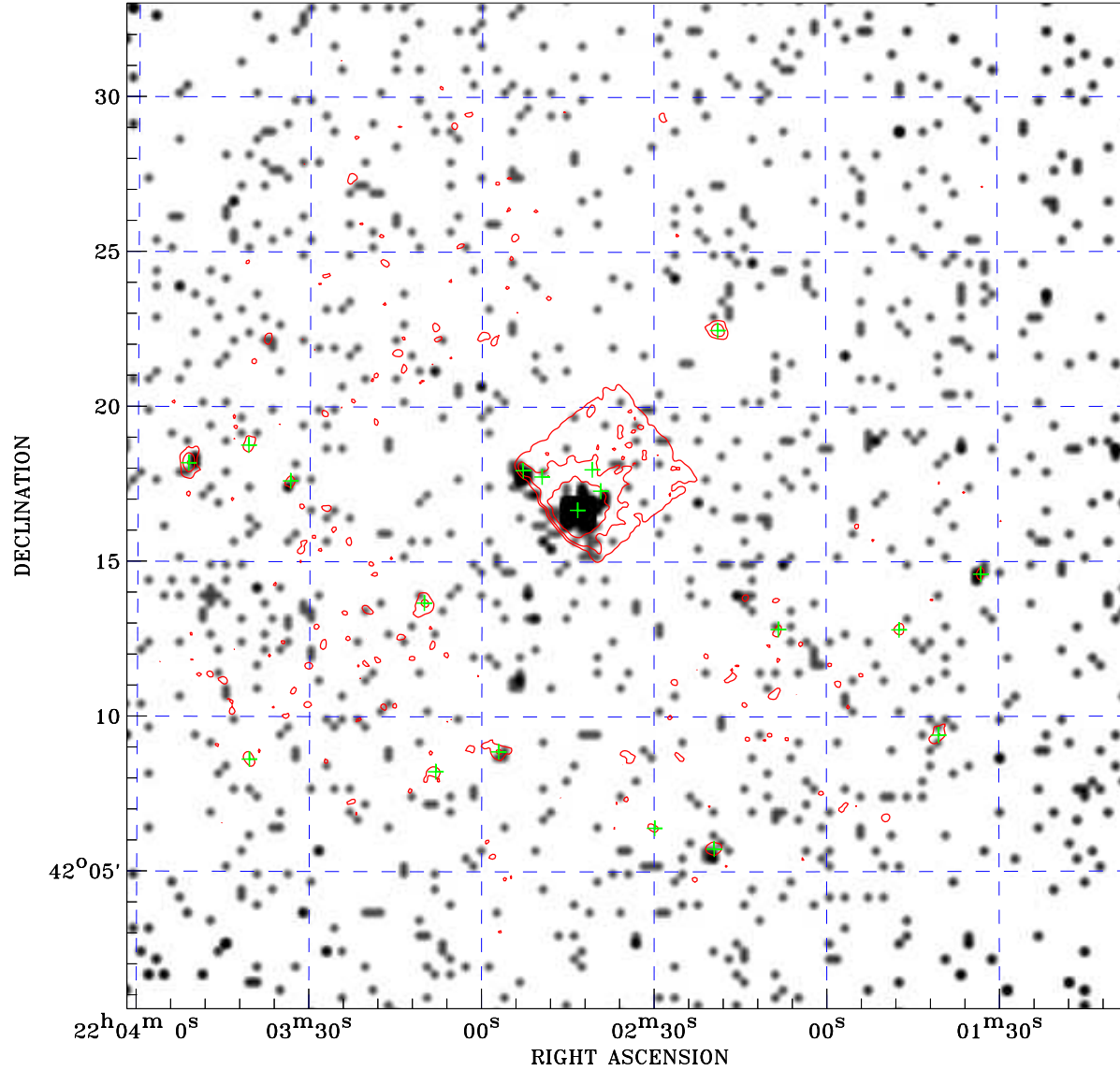


# PDF XMM ROSAT image ACDS V10.0



ROSAT image gray scale (Log) :  
  
 < 8.927E-05 > 7.809E-04  
 (counts s<sup>-1</sup>)

⊙ Epic image contour  
 levels at 2, 7 and 30 $\sigma$

+ Detected Epic sources

Principal Investigator :  
 Dr Claudia M. Raiteri

XMM target name :  
 BL Lacertae

Observation ID :  
 0501660201

Epic image :  
 $\alpha$  : 22 02 34.21  
 $\delta$  : +42 16 49.1  
 Energy band : 0.2–12.0 keV  
 MOS1 : 15675 s  
 MOS2 : 16715 s  
 PN : 13650 s

Contour levels (counts) :  
 2 $\sigma$  :9.734E-01 7 $\sigma$  :2.533E+00  
 30 $\sigma$  :9.706E+00

Nearest ROSAT image  
 from Epic image center :  
 Observation : 700838p  
 Instrument : PSPCB  
 $\alpha$  : 22 02 59.43  
 $\delta$  : +42 13 47.7

Other ROSAT images :  
 None

XMM SSC  
 Apr 26 11:52:31 2019