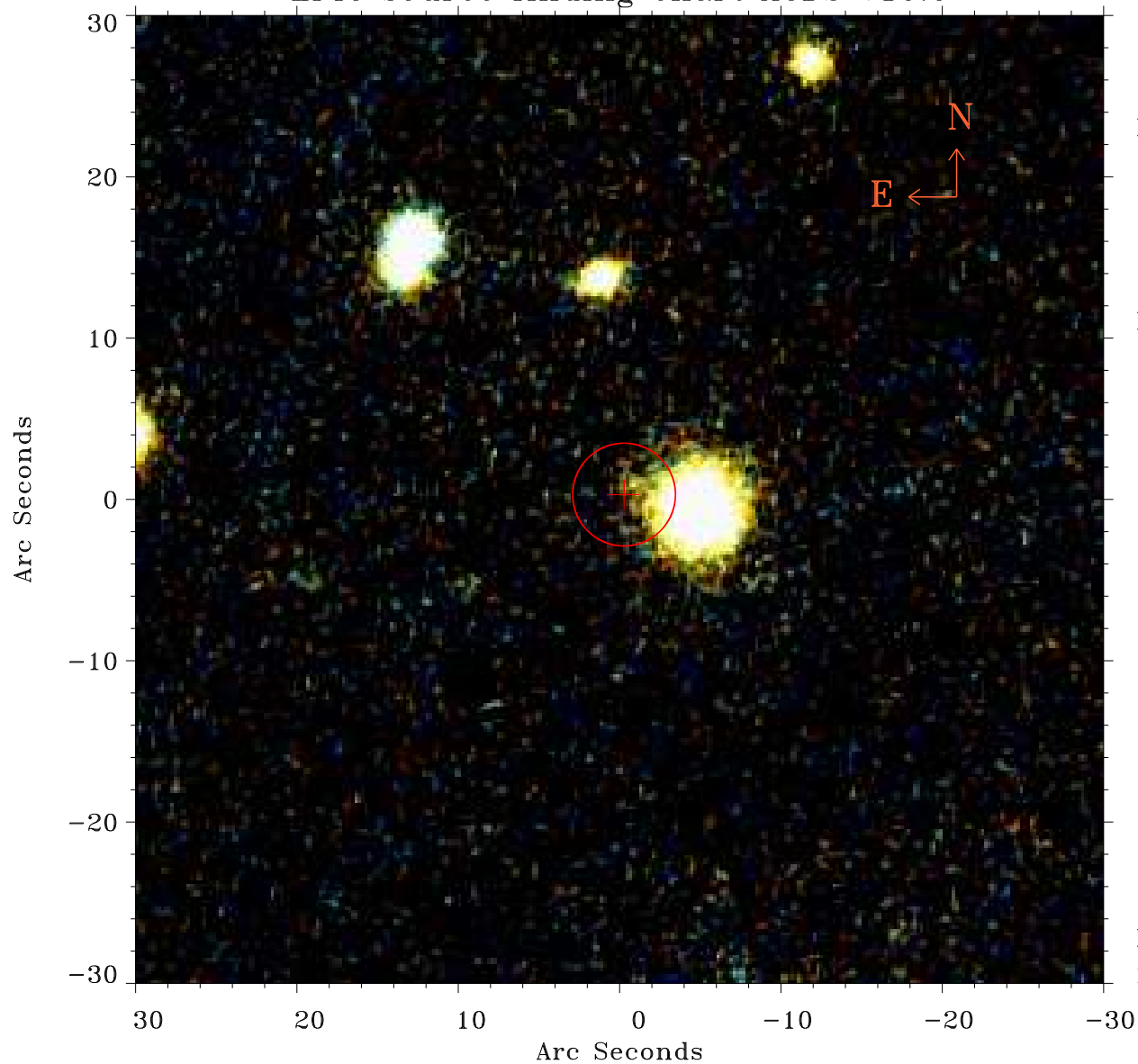


# EPIC source finding chart ACDS V10.0



Principal Investigator :

Dr Alessandra Lamastra

XMM target name :

SDSSJ084041.05+3838

OBS ID : 502060201

Source number : 50

X-ray coordinates :

$\alpha$  : 08 41 42.28

$\delta$  : +38 39 50.2

Center coordinates :

$\alpha$  : 08 41 42.29

$\delta$  : +38 39 50.1

Plate reference :

Origin : PanSTARRS-DR1

Color coding :

z band ●

(z+g)/2 ●

g band ●

Error:

R90 : 3.2 arsec

XMM SSC

May 1 22:59:50 2019