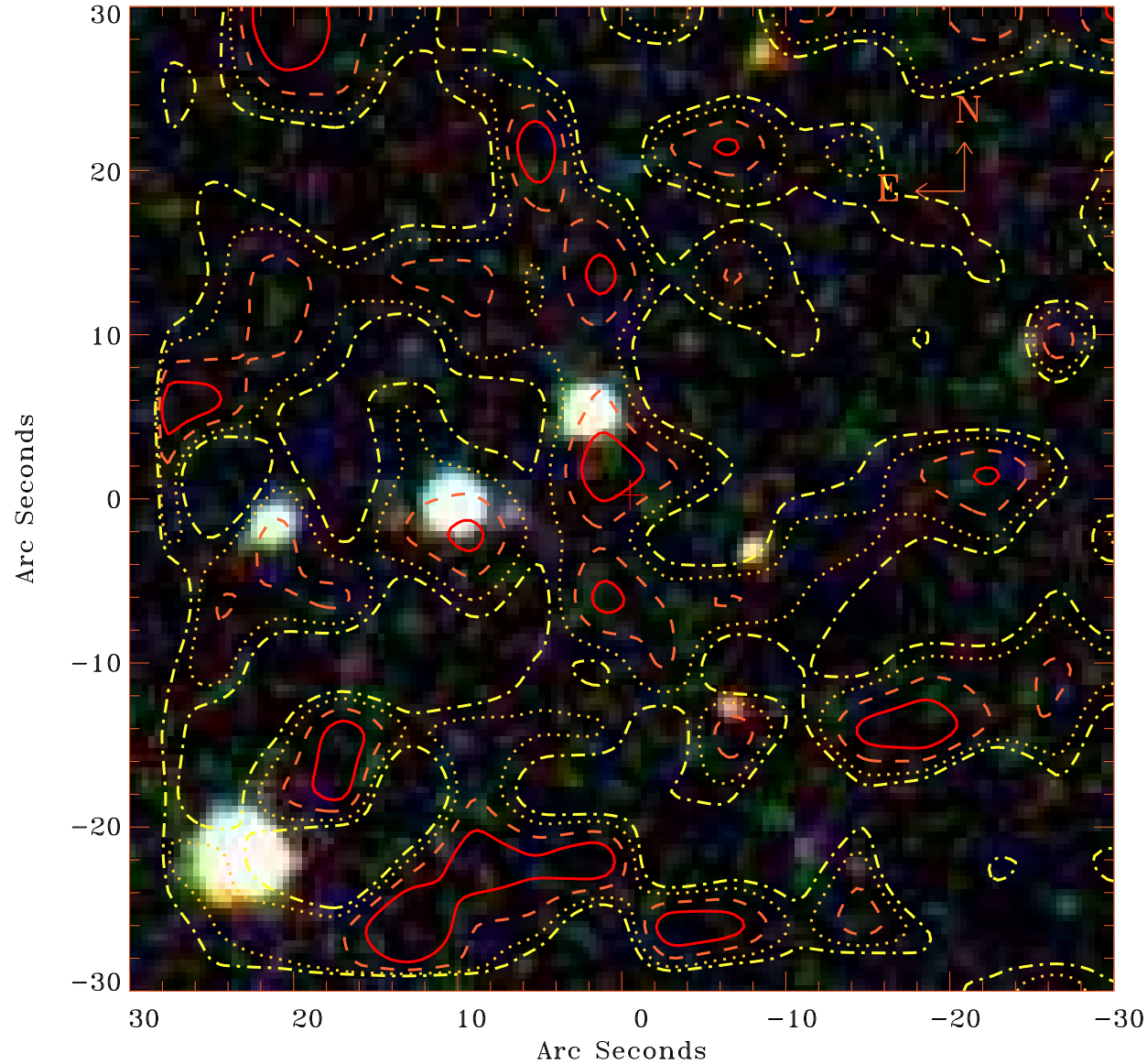


# EPIC source finding chart V10.0



Principal Investigator :

Dr Alessandra Lamastra

XMM target name :

SDSSJ094836.03+0021

OBS ID : 502061001

Source number : 3

X-ray coordinates :

$\alpha$  : 09 48 35.91

$\delta$  : +00 20 59.7

Center coordinates :

$\alpha$  : 09 48 35.91

$\delta$  : +00 20 59.9

Plate reference :

Origin : SDSS

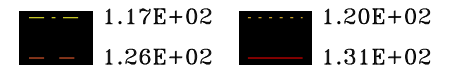
Color coding :

i band ●

r band ●

g band ●

Contour levels (counts) :



XMM SSC

Apr 20 17:15:11 2019