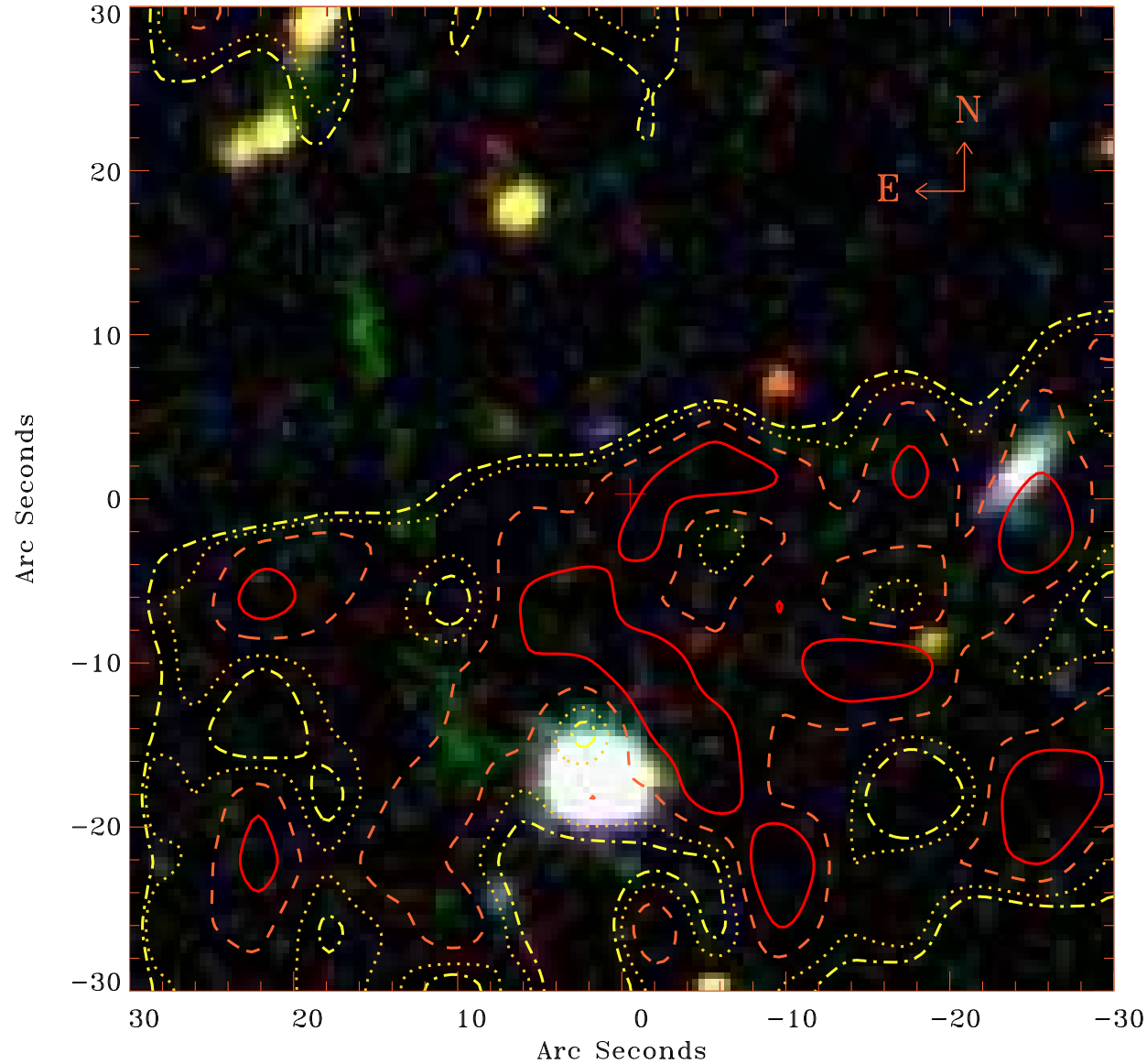


# EPIC source finding chart V10.0



Principal Investigator :

Dr Alessandra Lamastra

XMM target name :

SDSSJ094836.03+0021

OBS ID : 502061001

Source number : 4

X-ray coordinates :

$\alpha$  : 09 49 13.97

$\delta$  : +00 18 55.8

Center coordinates :

$\alpha$  : 09 49 13.98

$\delta$  : +00 18 55.9

Plate reference :

Origin : SDSS

Color coding :

i band ●

r band ●

g band ●

Contour levels (counts) :

9.00E+01  
1.01E+02

9.42E+01  
1.08E+02

XMM SSC

Apr 20 17:15:29 2019