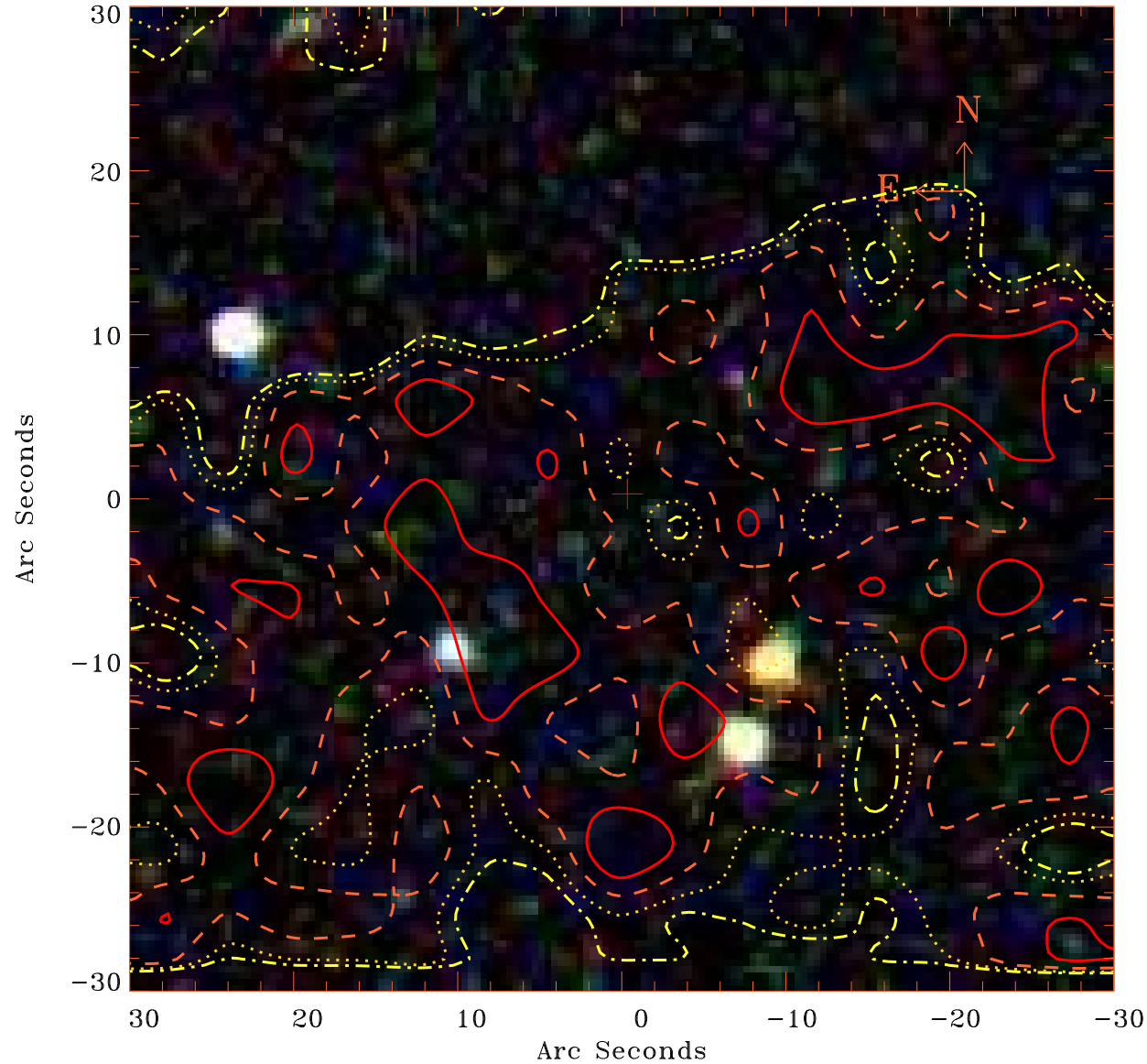


EPIC source finding chart V10.0



Principal Investigator :

Dr Alessandra Lamastra

XMM target name :

SDSSJ094836.03+0021

OBS ID : 502061001

Source number : 5

X-ray coordinates :

α : 09 49 03.71

δ : +00 19 31.1

Center coordinates :

α : 09 49 03.71

δ : +00 19 31.1

Plate reference :

Origin : SDSS

Color coding :

i band ●

r band ●

g band ●

Contour levels (counts) :

9.17E+01
1.03E+02

9.61E+01
1.11E+02

XMM SSC

Apr 20 17:15:23 2019