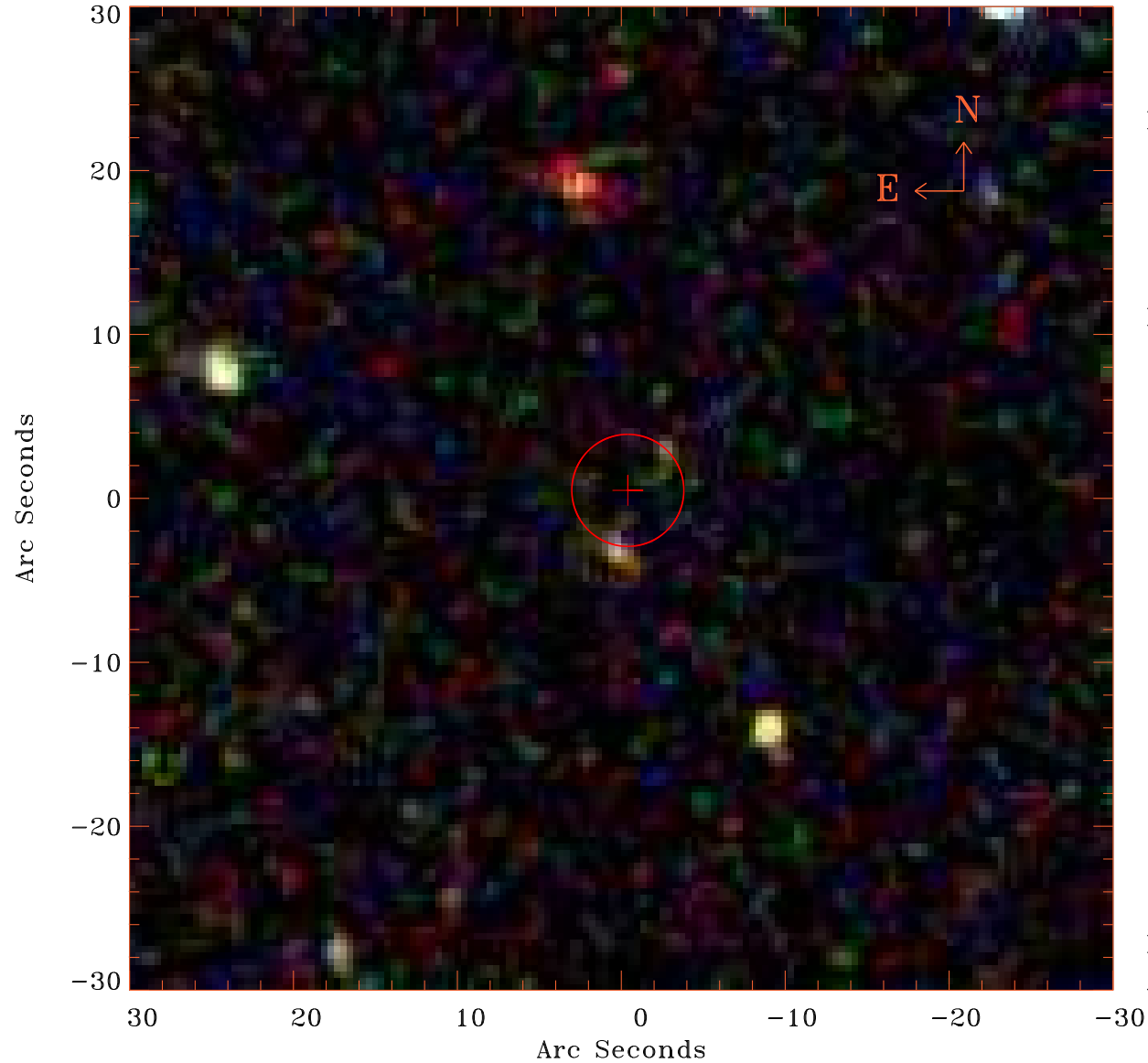


# EPIC source finding chart V10.0



Principal Investigator :

Dr Alessandra Lamastra

XMM target name :

SDSSJ094836.03+0021

OBS ID : 502061001

Source number : 8

X-ray coordinates :

$\alpha$  : 09 49 06.88

$\delta$  : +00 19 10.3

Center coordinates :

$\alpha$  : 09 49 06.88

$\delta$  : +00 19 10.2

Plate reference :

Origin : SDSS

Color coding :

i band ●

r band ●

g band ●

Error circle :

$R_{90}$  (") : 3.4

XMM SSC

Apr 20 17:15:25 2019