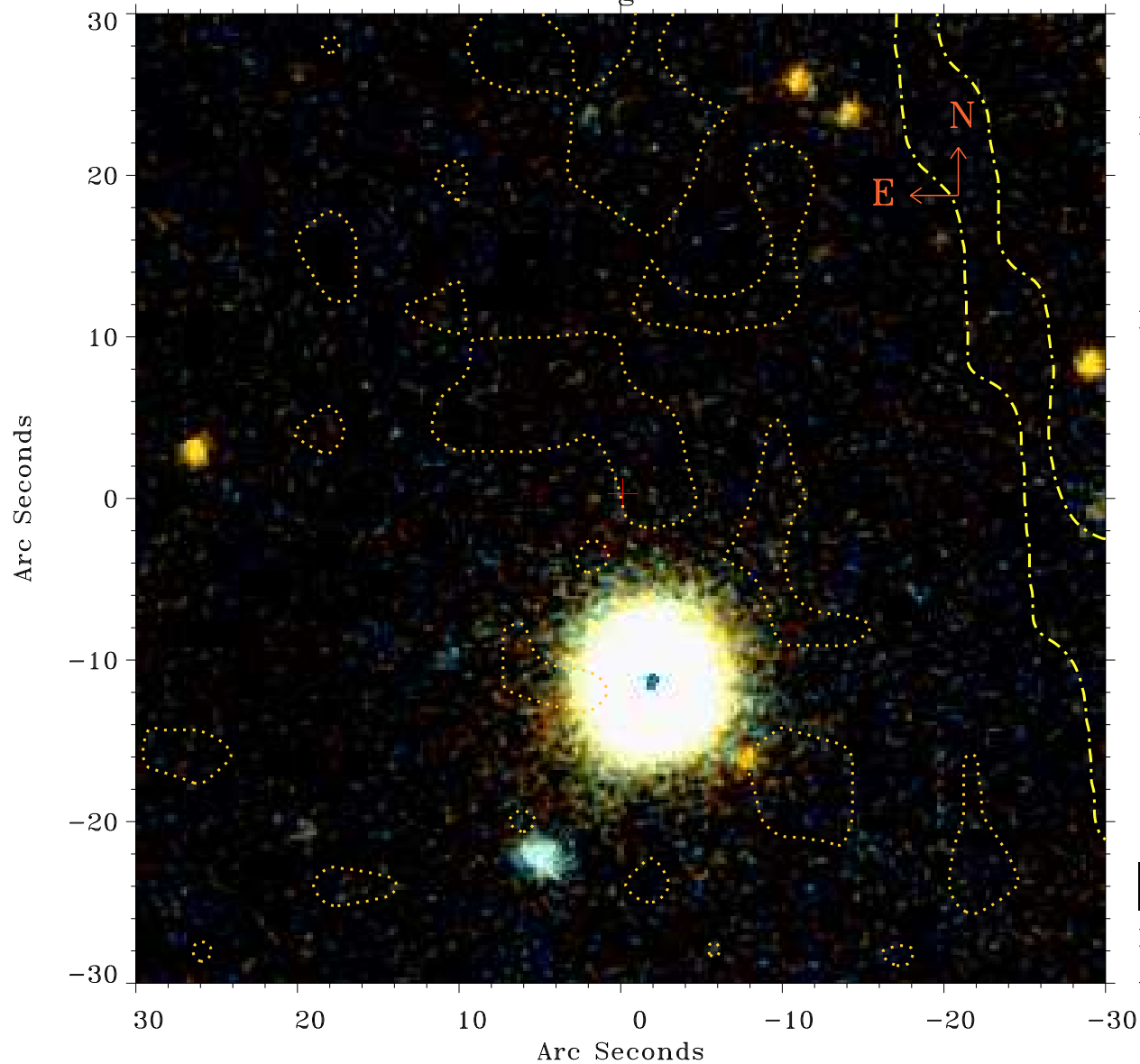


EPIC source finding chart ACDS V10.0



Principal Investigator :

Dr Alessandra Lamastra

XMM target name :

SDSSJ094836.03+0021

OBS ID : 502061001

Source number : 10

X-ray coordinates :

α : 09 48 30.26

δ : +00 14 29.6

Center coordinates :

α : 09 48 30.25

δ : +00 14 29.5

Plate reference :

Origin : PanSTARRS-DR1

Color coding :

z band ●

(z+g)/2 ●

g band ●

Contour levels (counts) :



XMM SSC

Apr 20 17:16:54 2019