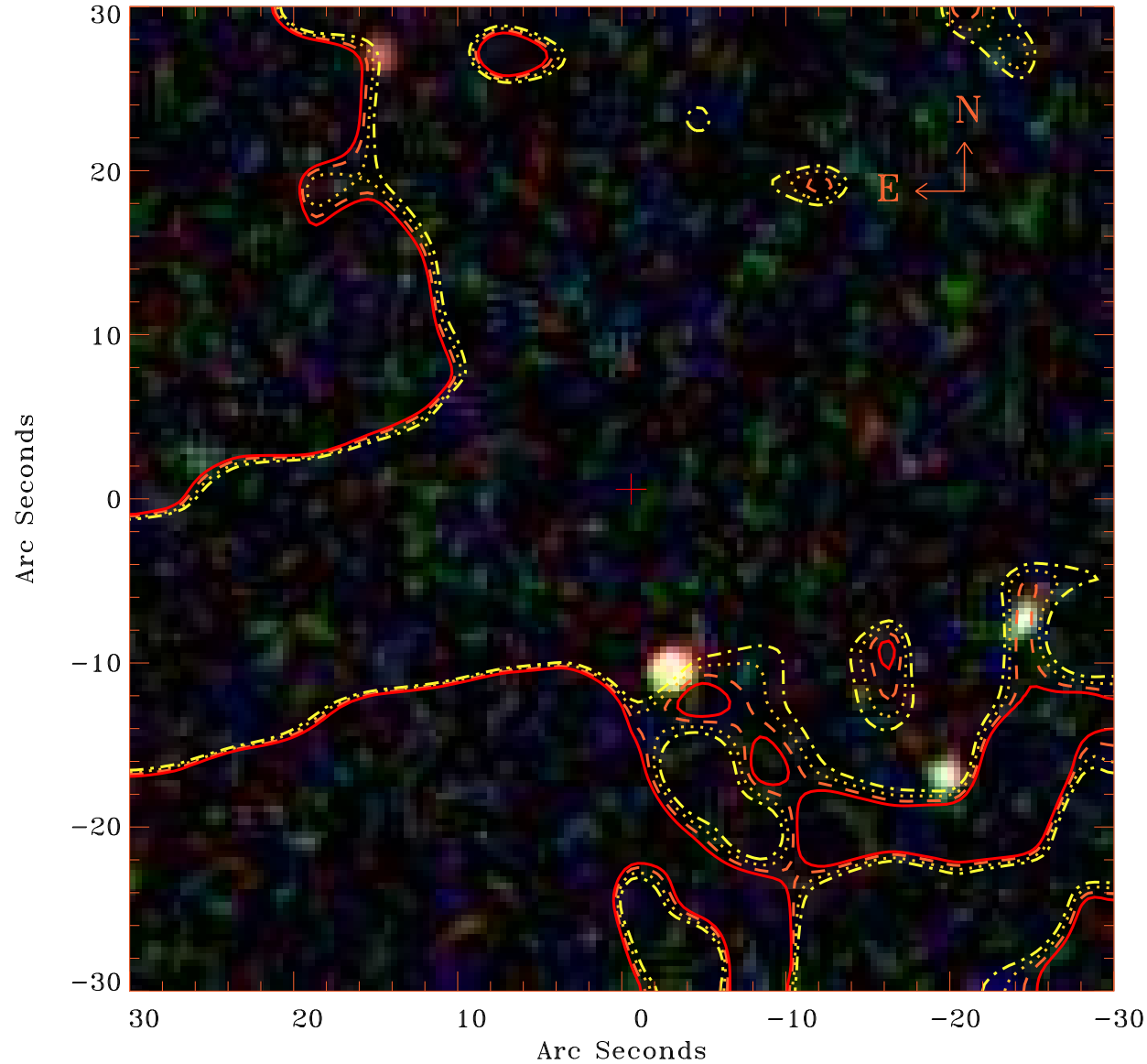


EPIC source finding chart V10.0



Principal Investigator :

Dr Alessandra Lamastra

XMM target name :

SDSSJ094836.03+0021

OBS ID : 502061001

Source number : 11

X-ray coordinates :

α : 09 48 57.89

δ : +00 20 18.5

Center coordinates :

α : 09 48 57.90

δ : +00 20 18.3

Plate reference :

Origin : SDSS

Color coding :

i band ●

r band ●

g band ●

Contour levels (counts) :

7.89E+01

8.16E+01

8.03E+01

8.27E+01

XMM SSC

Apr 20 17:15:19 2019