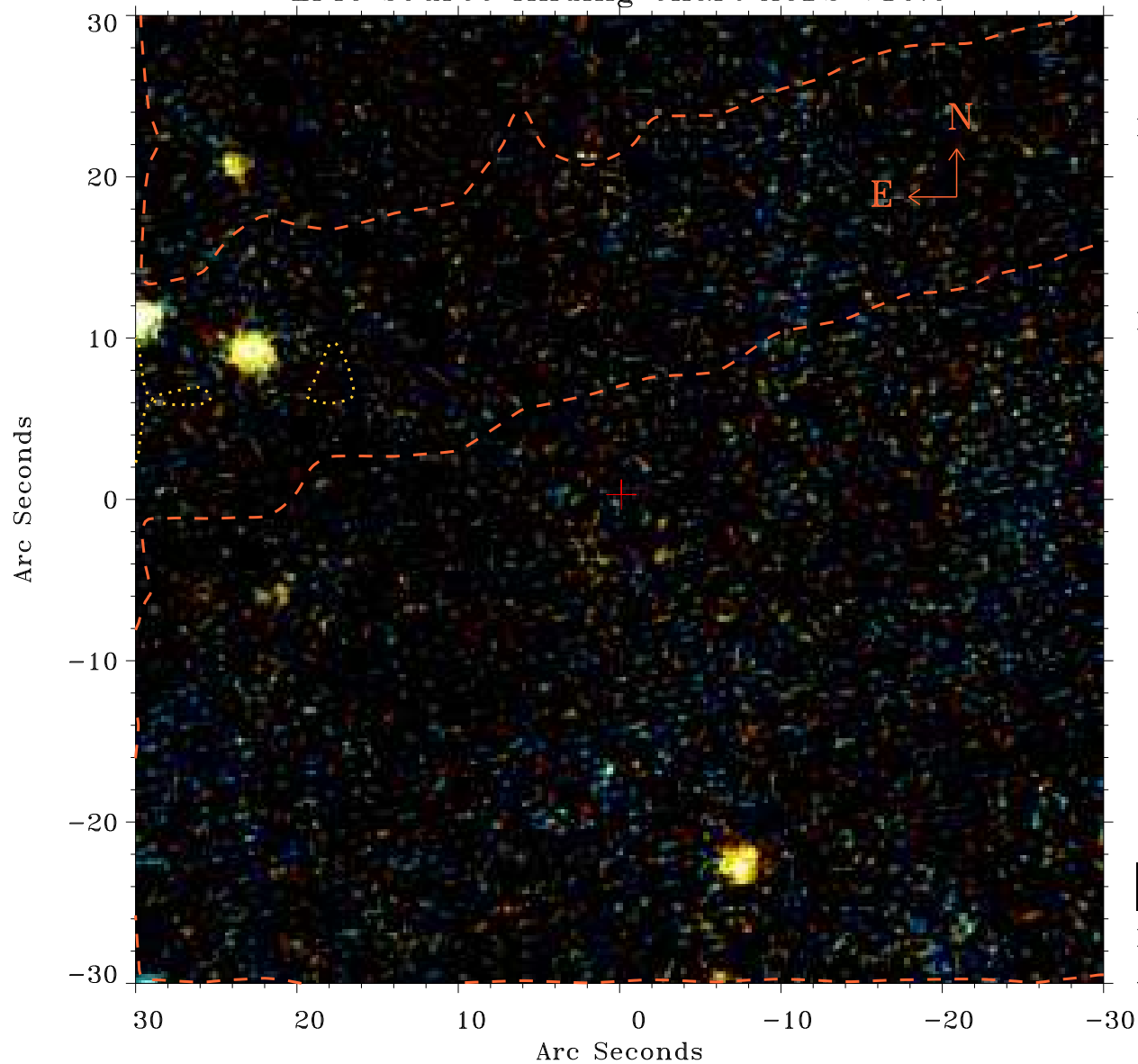


# EPIC source finding chart ACDS V10.0



Principal Investigator :

Dr Alessandra Lamastra

XMM target name :

SDSSJ094836.03+0021

OBS ID : 502061001

Source number : 17

X-ray coordinates :

$\alpha$  : 09 49 25.20

$\delta$  : +00 18 07.6

Center coordinates :

$\alpha$  : 09 49 25.20

$\delta$  : +00 18 07.5

Plate reference :

Origin : PanSTARRS-DR1

Color coding :

z band ●

(z+g)/2 ●

g band ●

Contour levels (counts) :



XMM SSC

Apr 20 17:18:14 2019