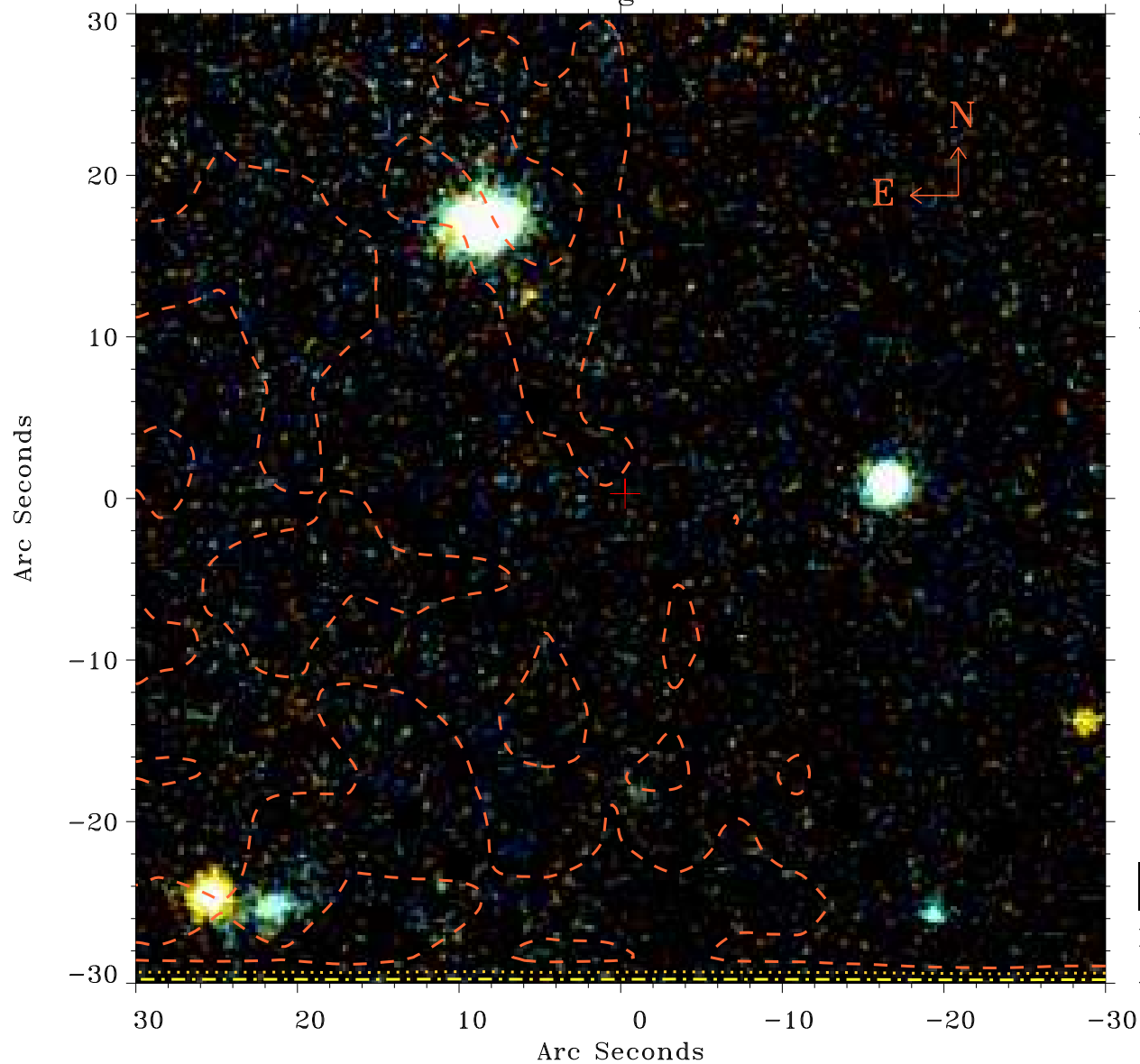


# EPIC source finding chart ACDS V10.0



Principal Investigator :

Dr Alessandra Lamastra

XMM target name :

SDSSJ094836.03+0021

OBS ID : 502061001

Source number : 48

X-ray coordinates :

$\alpha$  : 09 48 20.21

$\delta$  : +00 27 14.8

Center coordinates :

$\alpha$  : 09 48 20.21

$\delta$  : +00 27 14.7

Plate reference :

Origin : PanSTARRS-DR1

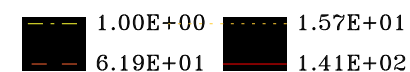
Color coding :

z band ●

(z+g)/2 ●

g band ●

Contour levels (counts) :



XMM SSC

Apr 20 17:16:28 2019