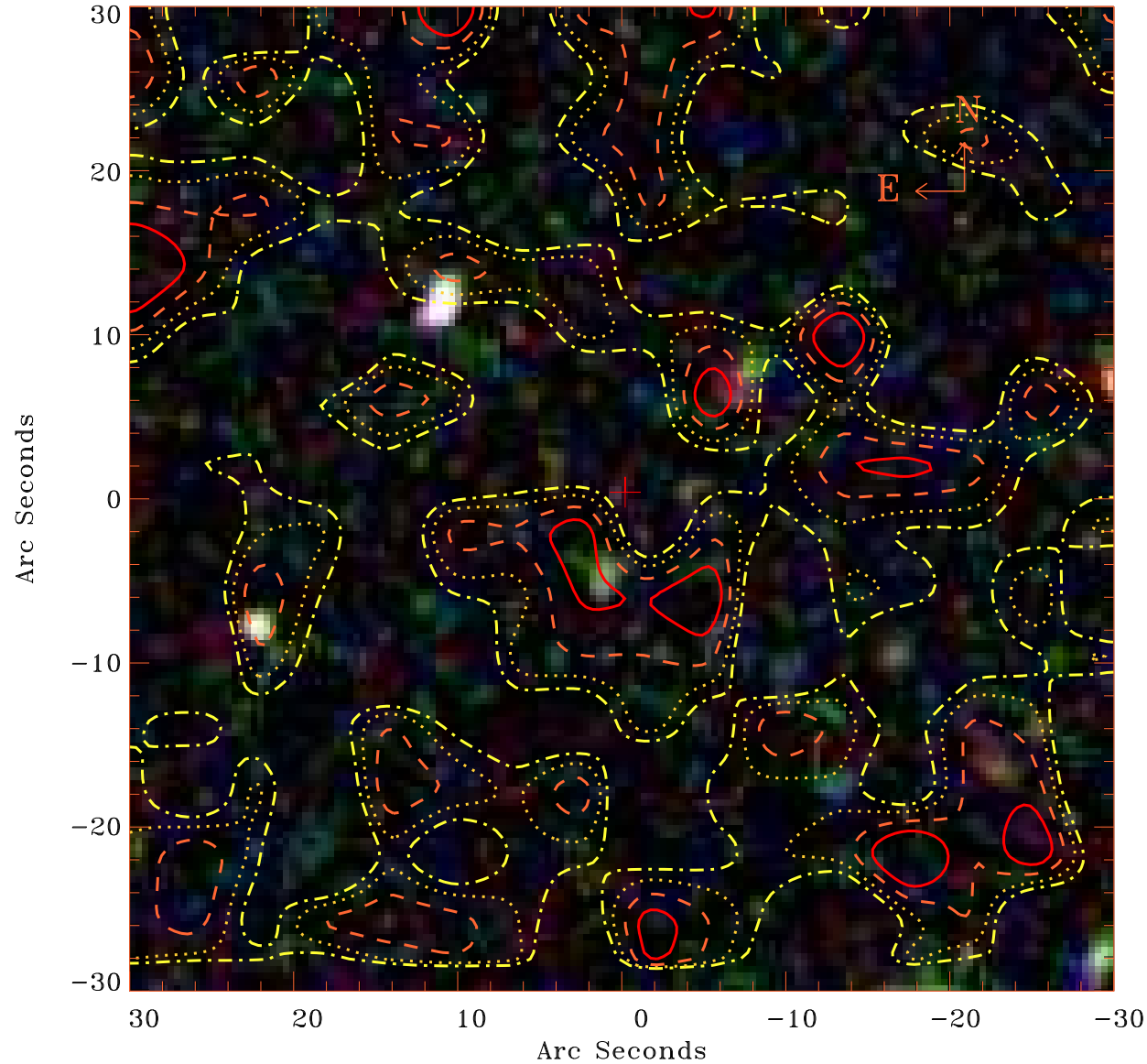


EPIC source finding chart V10.0



Principal Investigator :

Dr Alessandra Lamastra

XMM target name :

SDSSJ094836.03+0021

OBS ID : 502061001

Source number : 50

X-ray coordinates :

α : 09 48 28.11

δ : +00 20 23.5

Center coordinates :

α : 09 48 28.10

δ : +00 20 23.4

Plate reference :

Origin : SDSS

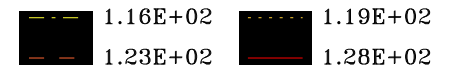
Color coding :

i band ●

r band ●

g band ●

Contour levels (counts) :



XMM SSC

Apr 20 17:15:03 2019