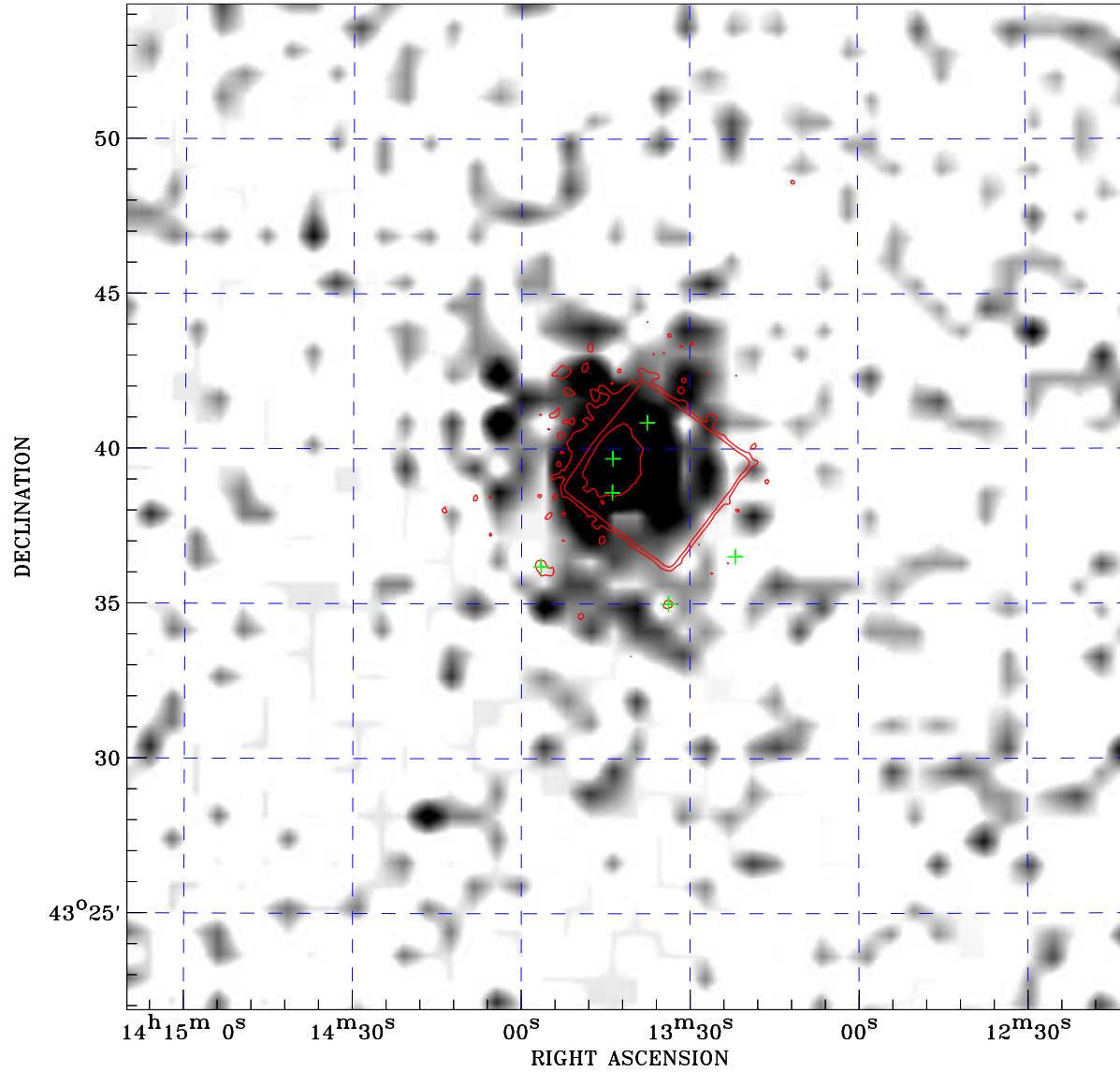


PDF XMM RASS image ACDS V10.0



RASS image gray scale (Log) :

< 1.333E-03 > 5.771E-03

(counts s⁻¹)

⊙ Epic image contour levels at 2, 7 and 30σ

+ Detected Epic sources

Principal Investigator :
Dr Hermine Landt

XMM target name :
RGBJ1413+4339

Observation ID :
0502790101

Epic image :
α : 14 13 40.70
δ : +43 38 08.2
Energy band : 0.2–12.0 keV
MOS1 : 11021 s
MOS2 : 10088 s
PN : 12670 s

Contour levels (counts) :
2σ :5.329E+00 7σ :1.261E+01
30σ 4.612E+01

RASS image :
Observation : 930929p
Instrument : PSPCC
α : 14 15 50.85
δ : +44 50 58.5

XMM SSC
Apr 24 07:01:50 2019