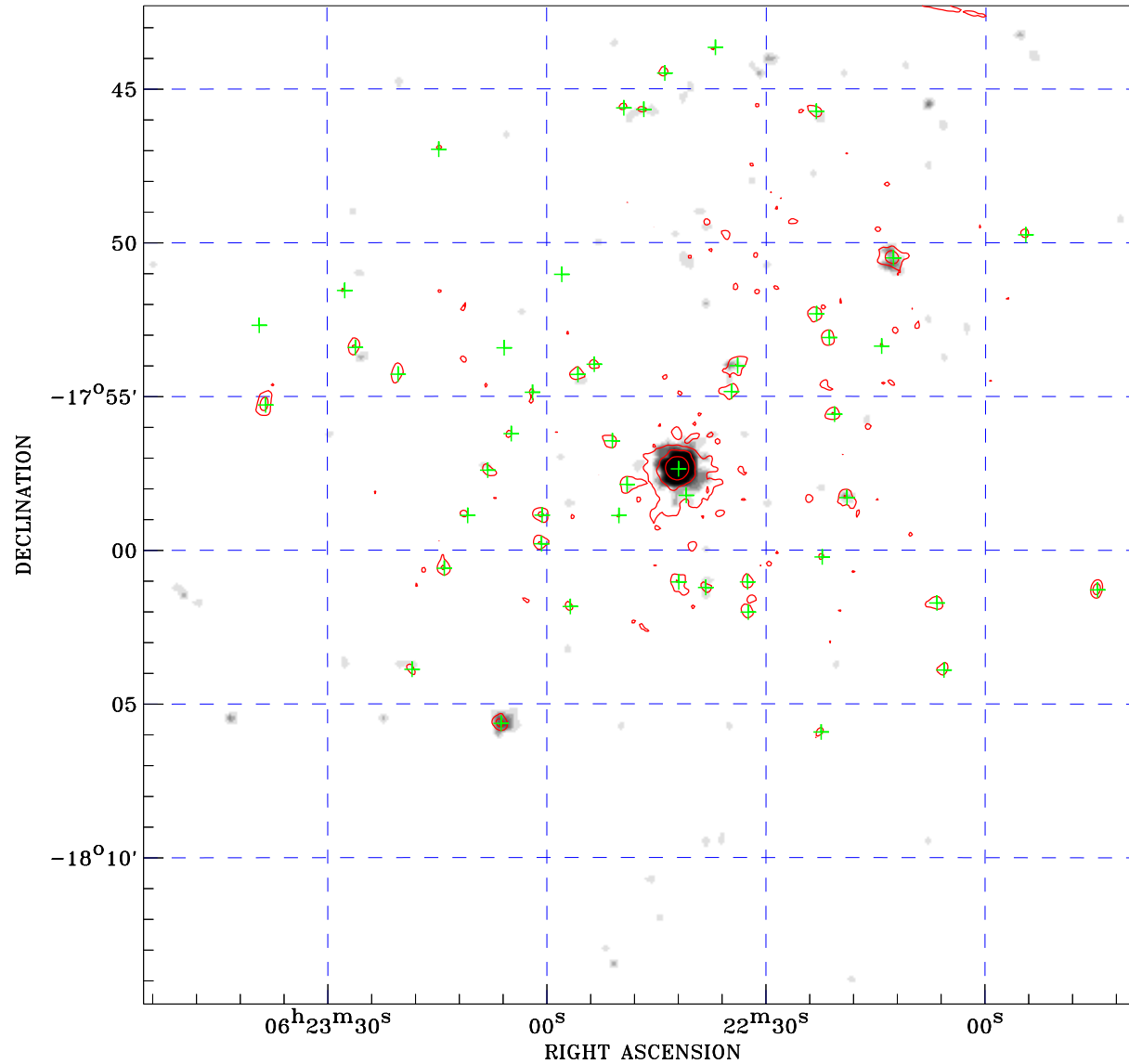



PDF XMM ROSAT image ACDS V10.0



ROSAT image gray scale (Log) :

 < 8.806E-05 > 1.479E-03
 (counts s⁻¹)

⊙ Epic image contour
 levels at 2, 7 and 30 σ

+ Detected Epic sources

Principal Investigator :
 Dr Wayne Waldron

XMM target name :
 Beta CMa

Observation ID :
 0503500101

Epic image :
 α : 06 22 46.88
 δ : -17 58 31.9
 Energy band : 0.2-12.0 keV
 MOS1 : 16039 s
 MOS2 : 16195 s
 PN : 14736 s

Contour levels (counts) :
 2 σ :2.758E+00 7 σ :6.252E+00
 30 σ 2.232E+01

Nearest ROSAT image
 from Epic image center :
 Observation : 200451f
 Instrument : PSPCB
 α : 06 22 53.44
 δ : -18 00 35.7

Other ROSAT images :
 None

XMM SSC
 May 3 12:48:37 2019