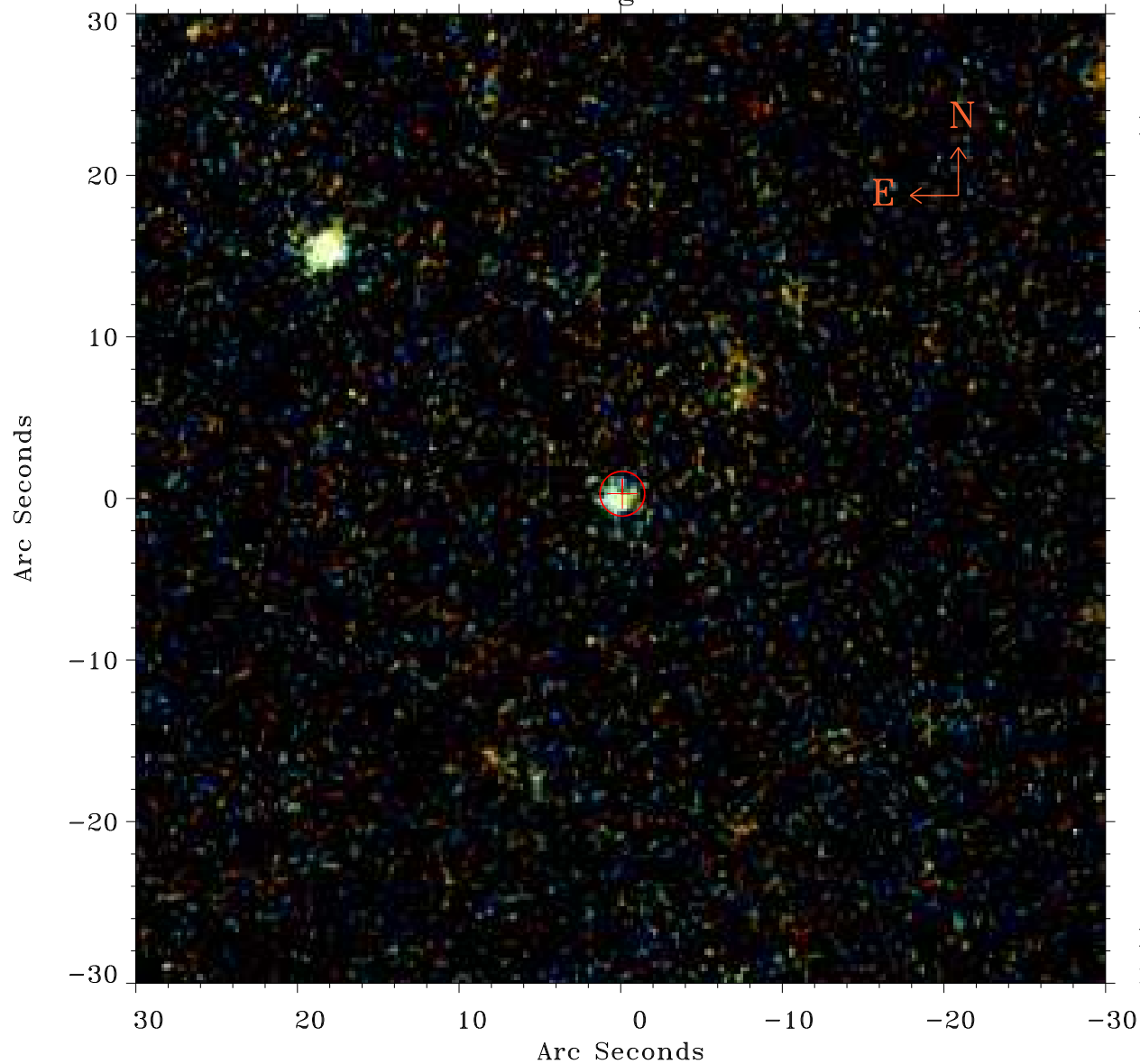


# EPIC source finding chart ACDS V10.0



Principal Investigator :

Dr Judith Croston

XMM target name :

7C 0213+3418

OBS ID : 551630201

Source number : 15

X-ray coordinates :

$\alpha$  : 02 13 56.68

$\delta$  : +34 18 38.4

Center coordinates :

$\alpha$  : 02 13 56.67

$\delta$  : +34 18 38.3

Plate reference :

Origin : PanSTARRS-DR1

Color coding :

z band ●

(z+g)/2 ●

g band ●

Error:

R90 : 1.4 arsec

XMM SSC

May 9 17:39:09 2019