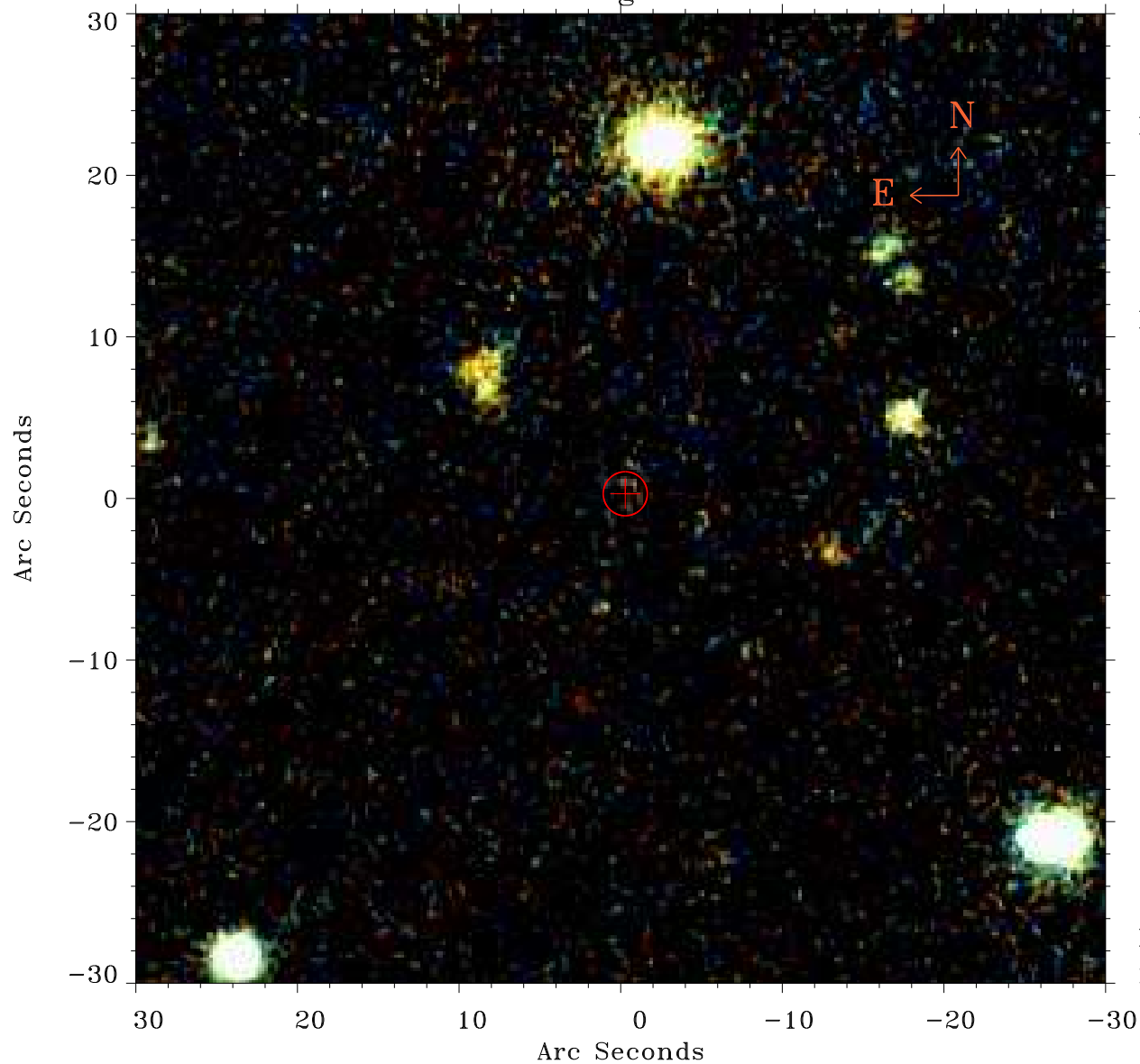


# EPIC source finding chart ACDS V10.0



Principal Investigator :

Dr Judith Croston

XMM target name :

6C 1200+3416

OBS ID : 551630301

Source number : 30

X-ray coordinates :

$\alpha$  : 12 00 29.30

$\delta$  : +34 08 58.9

Center coordinates :

$\alpha$  : 12 00 29.30

$\delta$  : +34 08 58.8

Plate reference :

Origin : PanSTARRS-DR1

Color coding :

z band ●

(z+g)/2 ●

g band ●

Error:

R90 : 1.4 arsec

XMM SSC

May 3 04:14:00 2019