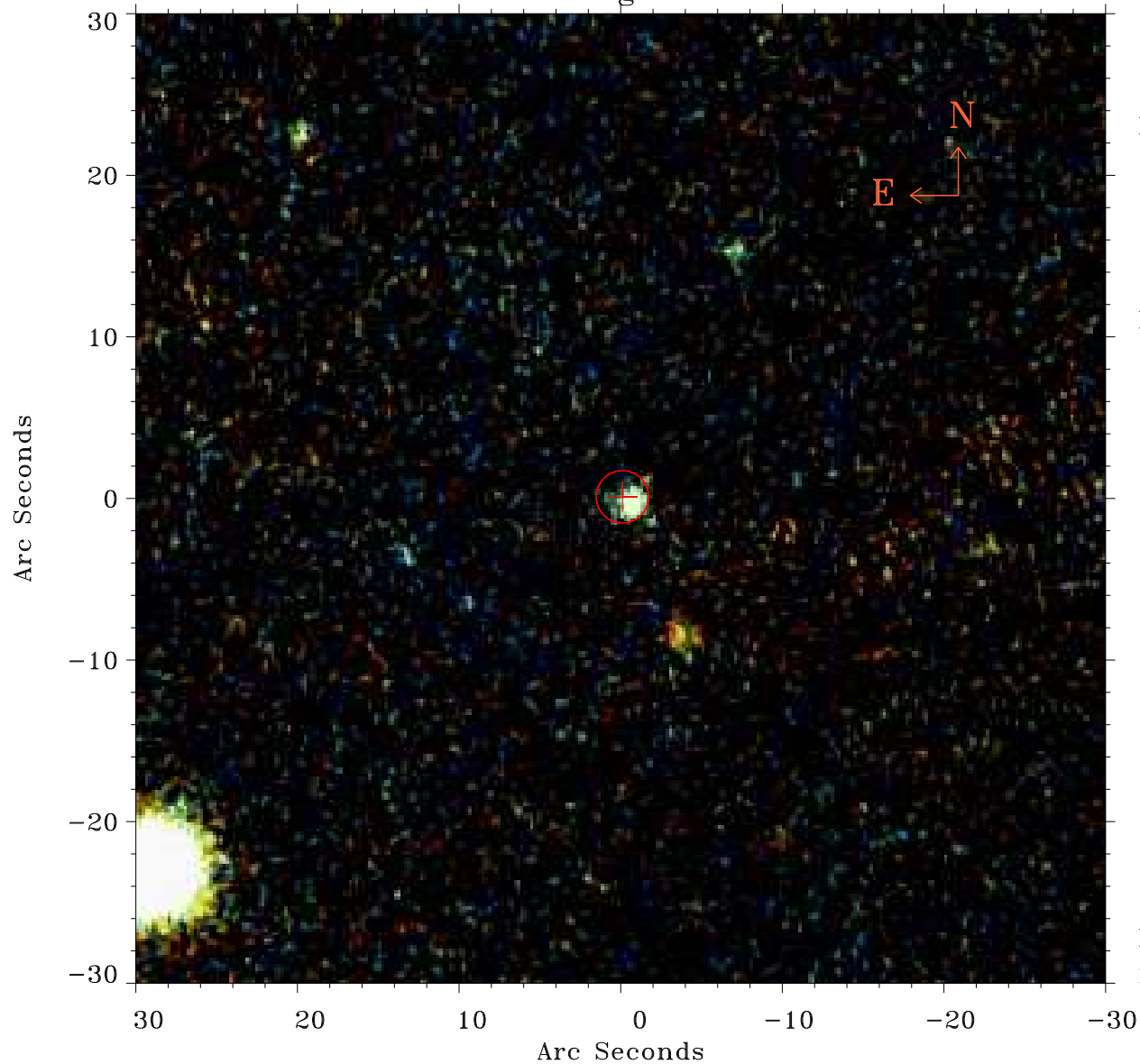


# EPIC source finding chart ACDS V10.0



Principal Investigator :

Dr Judith Croston

XMM target name :

6C 1200+3416

OBS ID : 551630301

Source number : 55

X-ray coordinates :

$\alpha$  : 12 01 17.23

$\delta$  : +34 05 44.3

Center coordinates :

$\alpha$  : 12 01 17.22

$\delta$  : +34 05 44.4

Plate reference :

Origin : PanSTARRS-DR1

Color coding :

z band ●

(z+g)/2 ●

g band ●

Error:

R90 : 1.6 arcsec

XMM SSC

May 3 04:18:05 2019