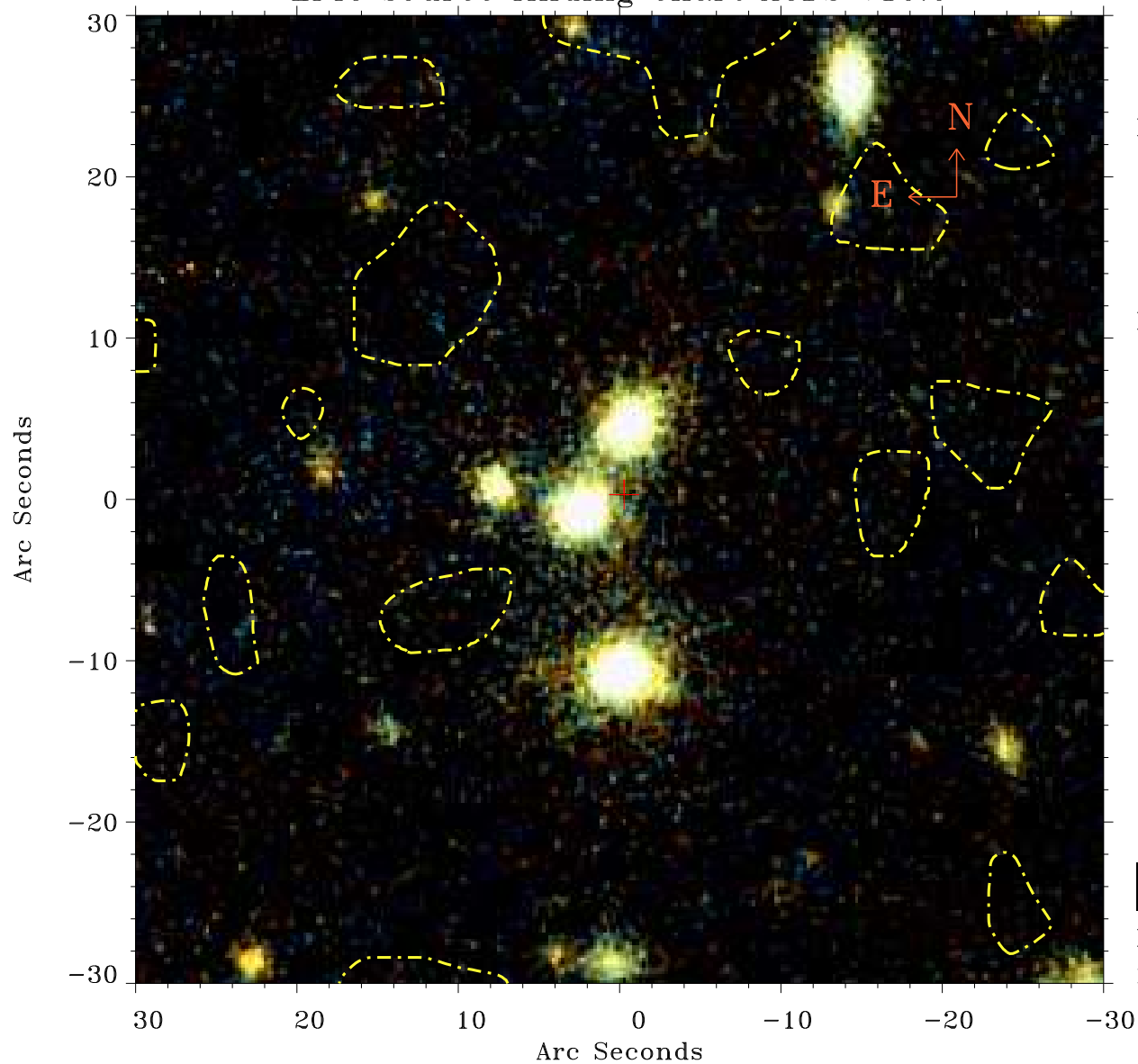


EPIC source finding chart ACDS V10.0



Principal Investigator :

Dr Judith Croston

XMM target name :

6C 1200+3416

OBS ID : 551630301

Source number : 61

X-ray coordinates :

α : 12 00 45.30

δ : +34 24 53.9

Center coordinates :

α : 12 00 45.30

δ : +34 24 53.8

Plate reference :

Origin : PanSTARRS-DR1

Color coding :

z band ●

(z+g)/2 ●

g band ●

Contour levels (counts) :



XMM SSC

May 3 04:15:20 2019