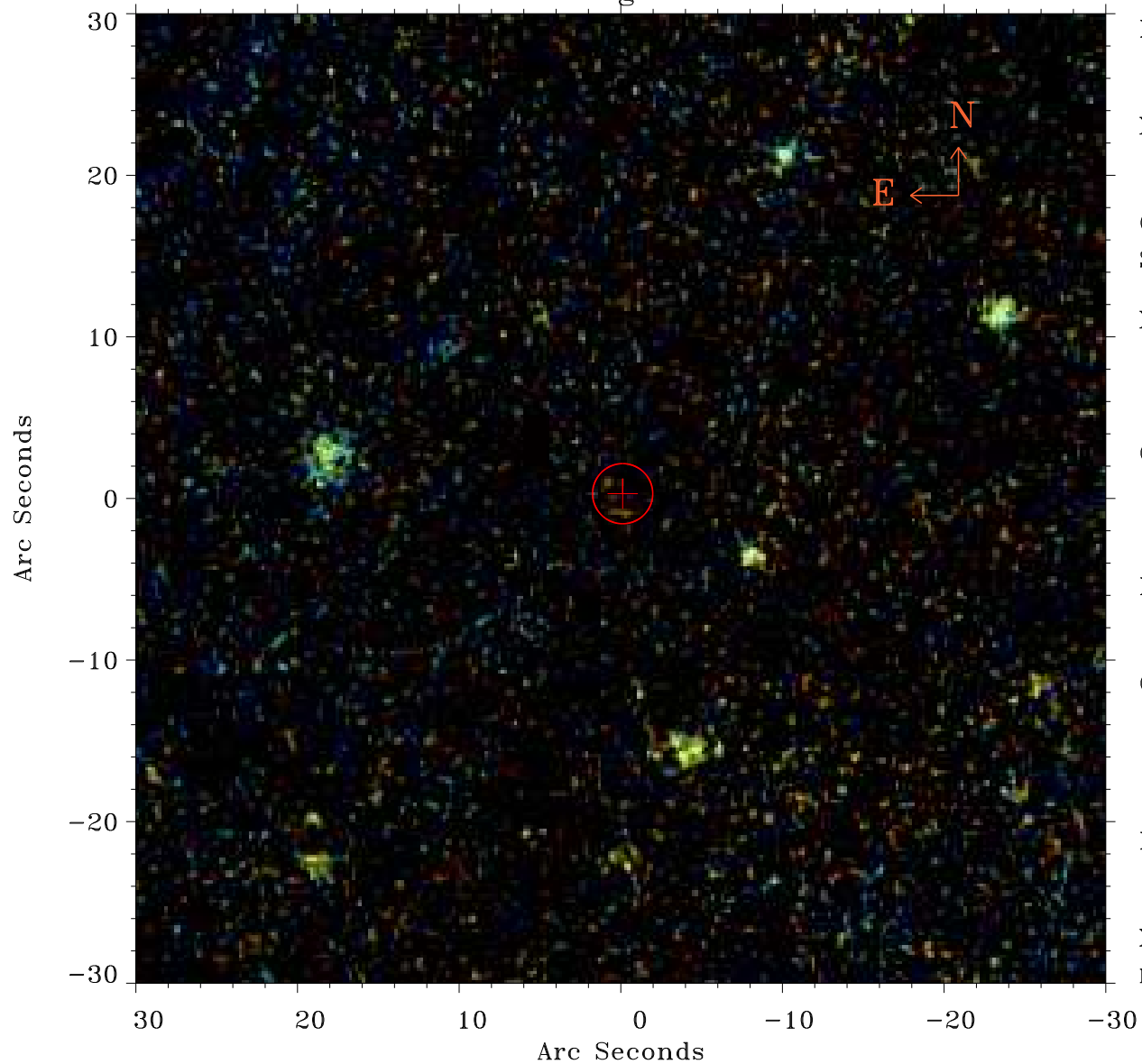


EPIC source finding chart ACDS V10.0



Principal Investigator :

Dr Judith Croston

XMM target name :

6C 1200+3416

OBS ID : 551630301

Source number : 65

X-ray coordinates :

α : 12 00 14.95

δ : +34 13 12.5

Center coordinates :

α : 12 00 14.94

δ : +34 13 12.4

Plate reference :

Origin : PanSTARRS-DR1

Color coding :

z band ●

(z+g)/2 ●

g band ●

Error:

R90 : 1.9 arsec

XMM SSC

May 3 04:12:22 2019