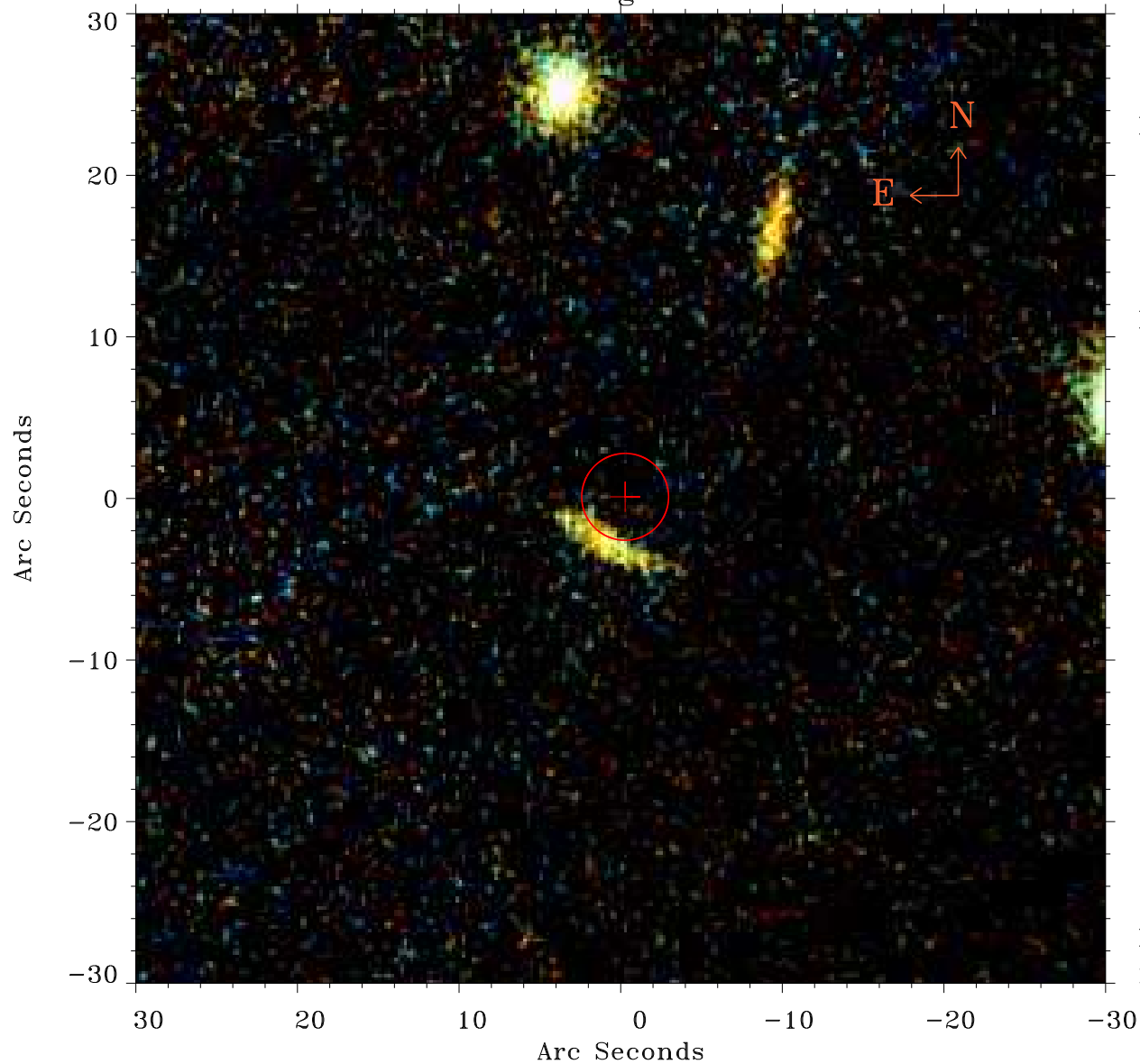


EPIC source finding chart ACDS V10.0



Principal Investigator :

Dr Judith Croston

XMM target name :

6C 1200+3416

OBS ID : 551630301

Source number : 91

X-ray coordinates :

α : 12 01 22.21

δ : +34 05 15.0

Center coordinates :

α : 12 01 22.22

δ : +34 05 15.1

Plate reference :

Origin : PanSTARRS-DR1

Color coding :

z band ●

(z+g)/2 ●

g band ●

Error:

R90 : 2.7 arcsec

XMM SSC

May 3 04:18:35 2019