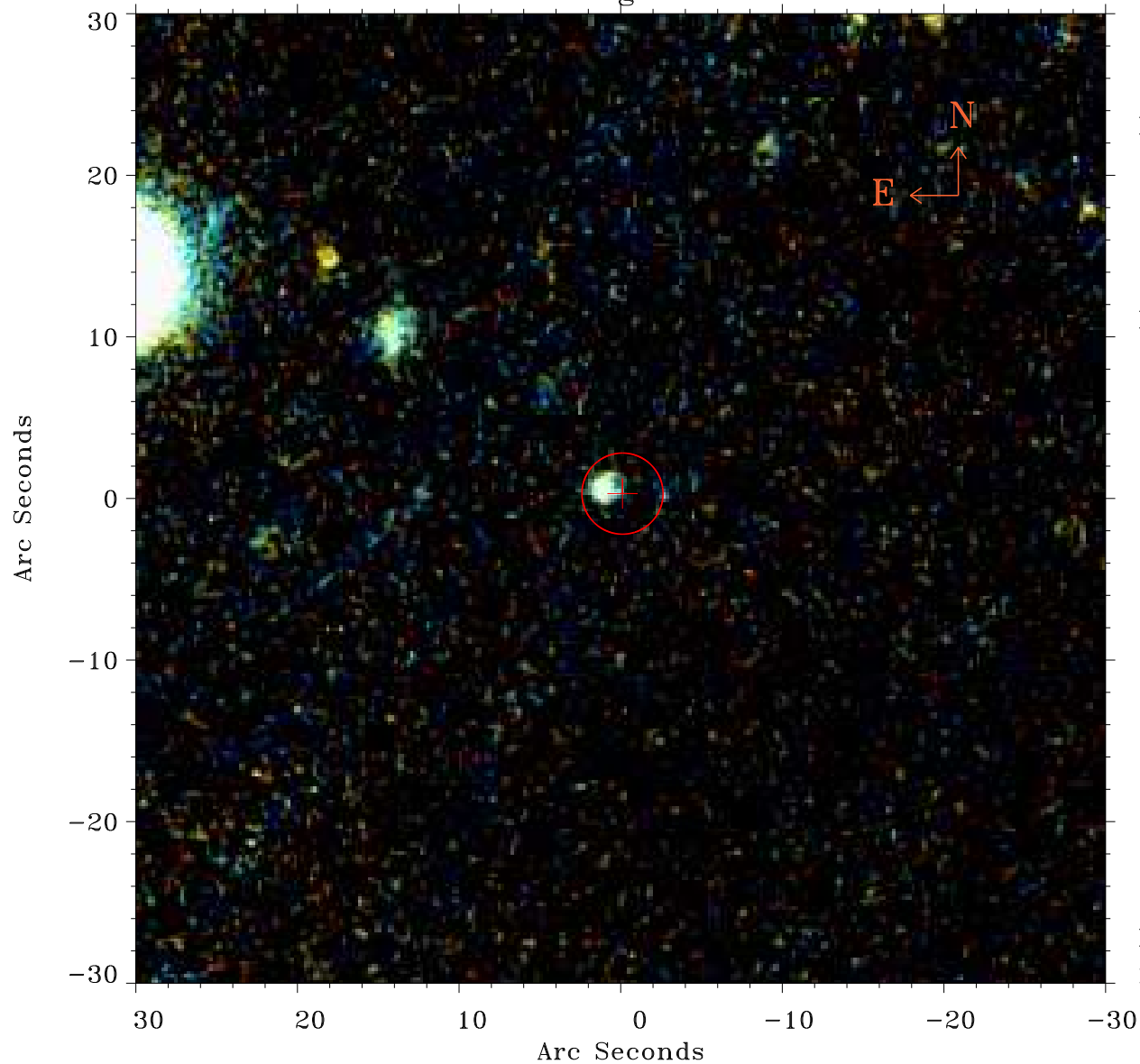


EPIC source finding chart ACDS V10.0



Principal Investigator :

Dr Judith Croston

XMM target name :

6C 1200+3416

OBS ID : 551630301

Source number : 98

X-ray coordinates :

α : 12 00 25.22

δ : +34 15 31.5

Center coordinates :

α : 12 00 25.22

δ : +34 15 31.4

Plate reference :

Origin : PanSTARRS-DR1

Color coding :

z band ●

(z+g)/2 ●

g band ●

Error:

R90 : 2.5 arsec

XMM SSC

May 3 04:13:30 2019