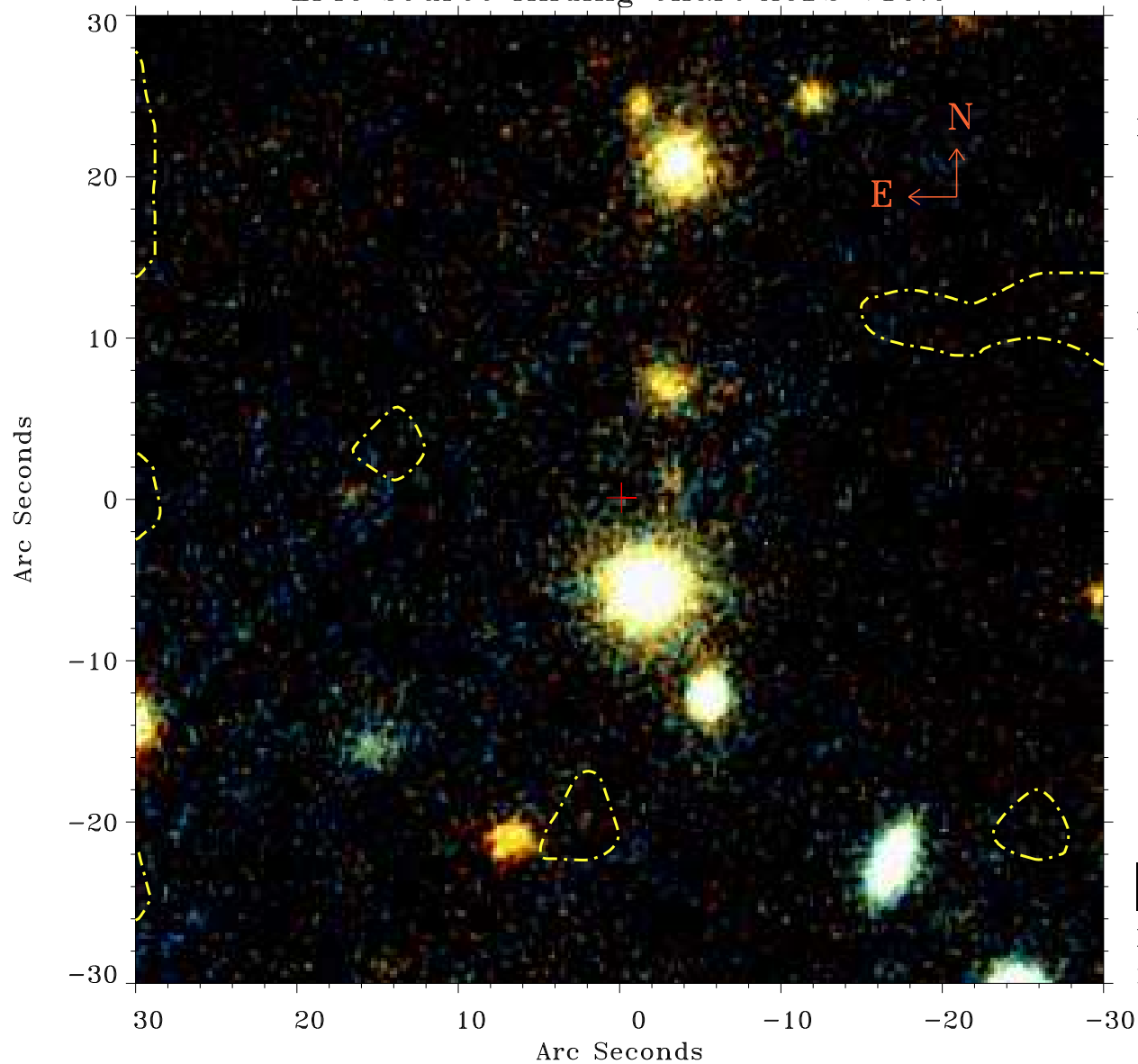


EPIC source finding chart ACDS V10.0



Principal Investigator :

Dr Judith Croston

XMM target name :

6C 1200+3416

OBS ID : 551630301

Source number : 103

X-ray coordinates :

α : 12 01 31.29

δ : +34 15 11.9

Center coordinates :

α : 12 01 31.28

δ : +34 15 12.0

Plate reference :

Origin : PanSTARRS-DR1

Color coding :

z band ●

(z+g)/2 ●

g band ●

Contour levels (counts) :



XMM SSC

May 3 04:19:25 2019