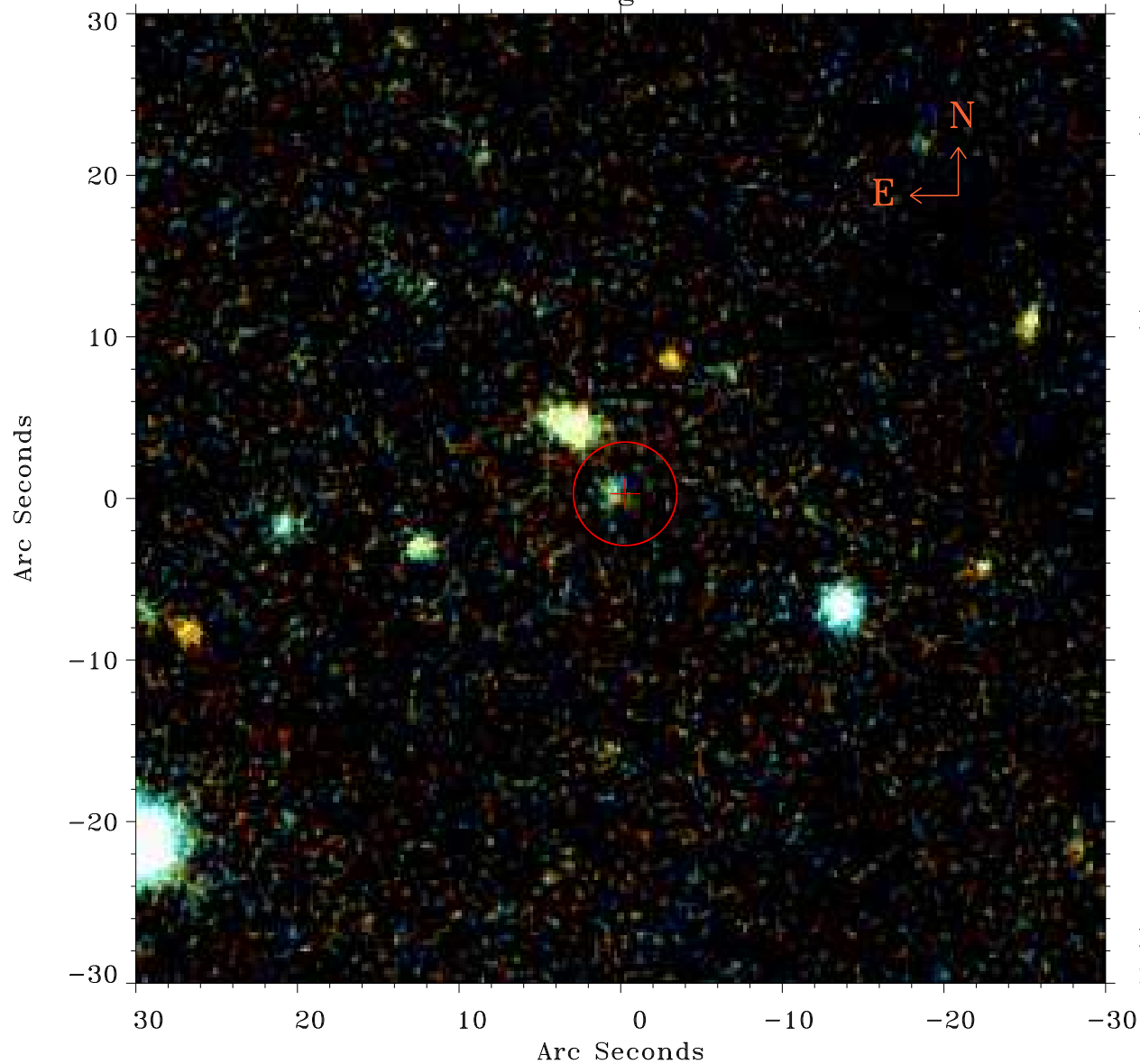


EPIC source finding chart ACDS V10.0



Principal Investigator :

Dr Judith Croston

XMM target name :

6C 1200+3416

OBS ID : 551630301

Source number : 110

X-ray coordinates :

α : 12 00 54.24

δ : +34 28 49.3

Center coordinates :

α : 12 00 54.25

δ : +34 28 49.2

Plate reference :

Origin : PanSTARRS-DR1

Color coding :

z band ●

(z+g)/2 ●

g band ●

Error:

R90 : 3.2 arcsec

XMM SSC

May 3 04:16:32 2019