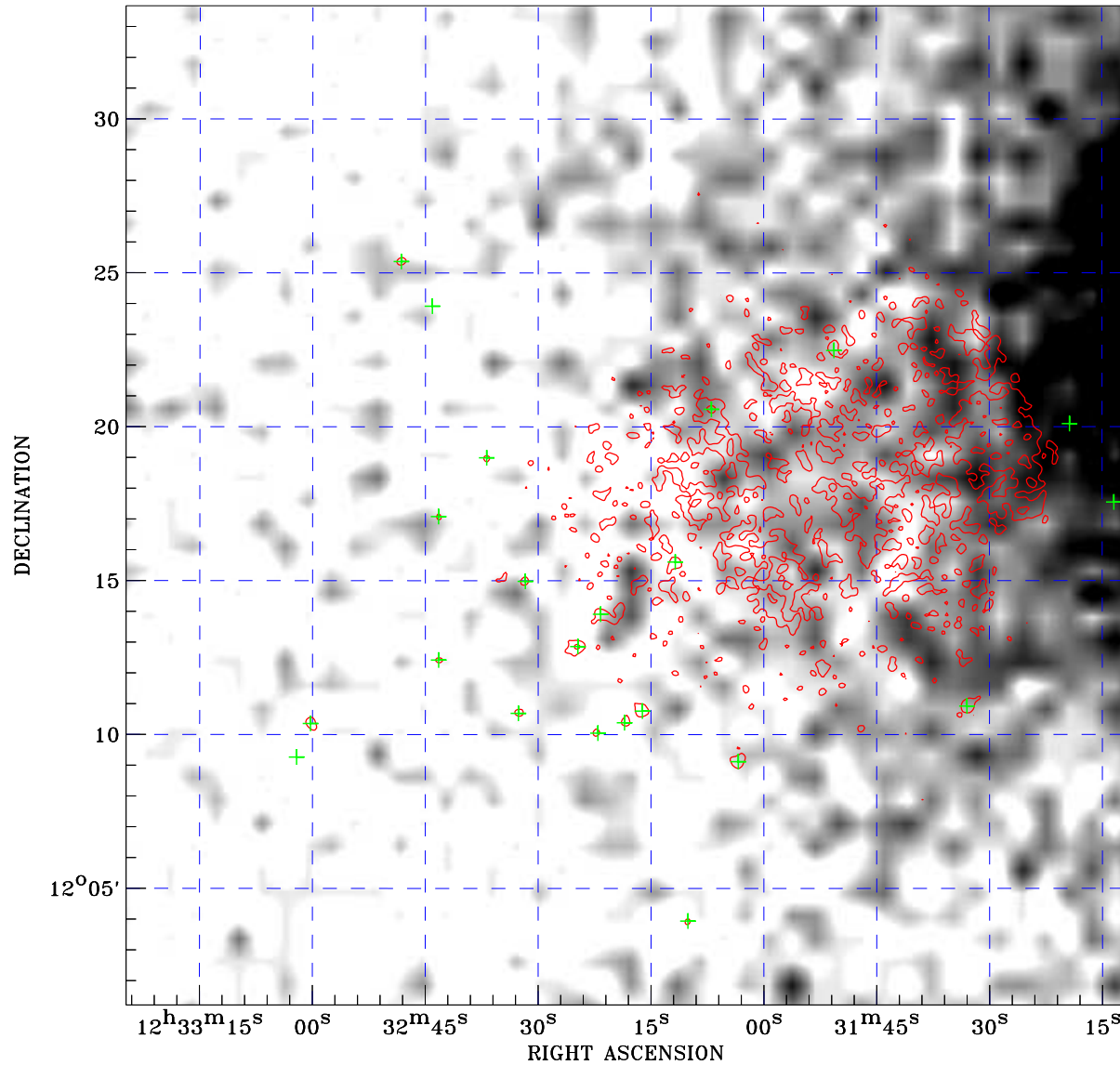



# PDF XMM RASS image ACDS V10.0



RASS image gray scale (Log) :  
  
 < 3.851E-03 > 2.213E-02  
 (counts s<sup>-1</sup>)

⊙ Epic image contour  
 levels at 2, 7 and 30 $\sigma$

+ Detected Epic sources

Principal Investigator :  
 Dr William Forman

XMM target name :  
 M87-1

Observation ID :  
 0551871201

Epic image :  
 $\alpha$  : 12 32 18.36  
 $\delta$  : +12 17 27.0  
 Energy band : 0.2-12.0 keV  
 MOS1 : 8616 s  
 MOS2 : 8619 s  
 PN : 4738 s

Contour levels (counts) :  
 2 $\sigma$  :2.849E+00 7 $\sigma$  :7.279E+00  
 30 $\sigma$  :2.766E+01

RASS image :  
 Observation : 931534p  
 Instrument : PSPCC  
 $\alpha$  : 12 34 21.74  
 $\delta$  : +11 05 59.1

XMM SSC  
 Apr 23 15:54:35 2019