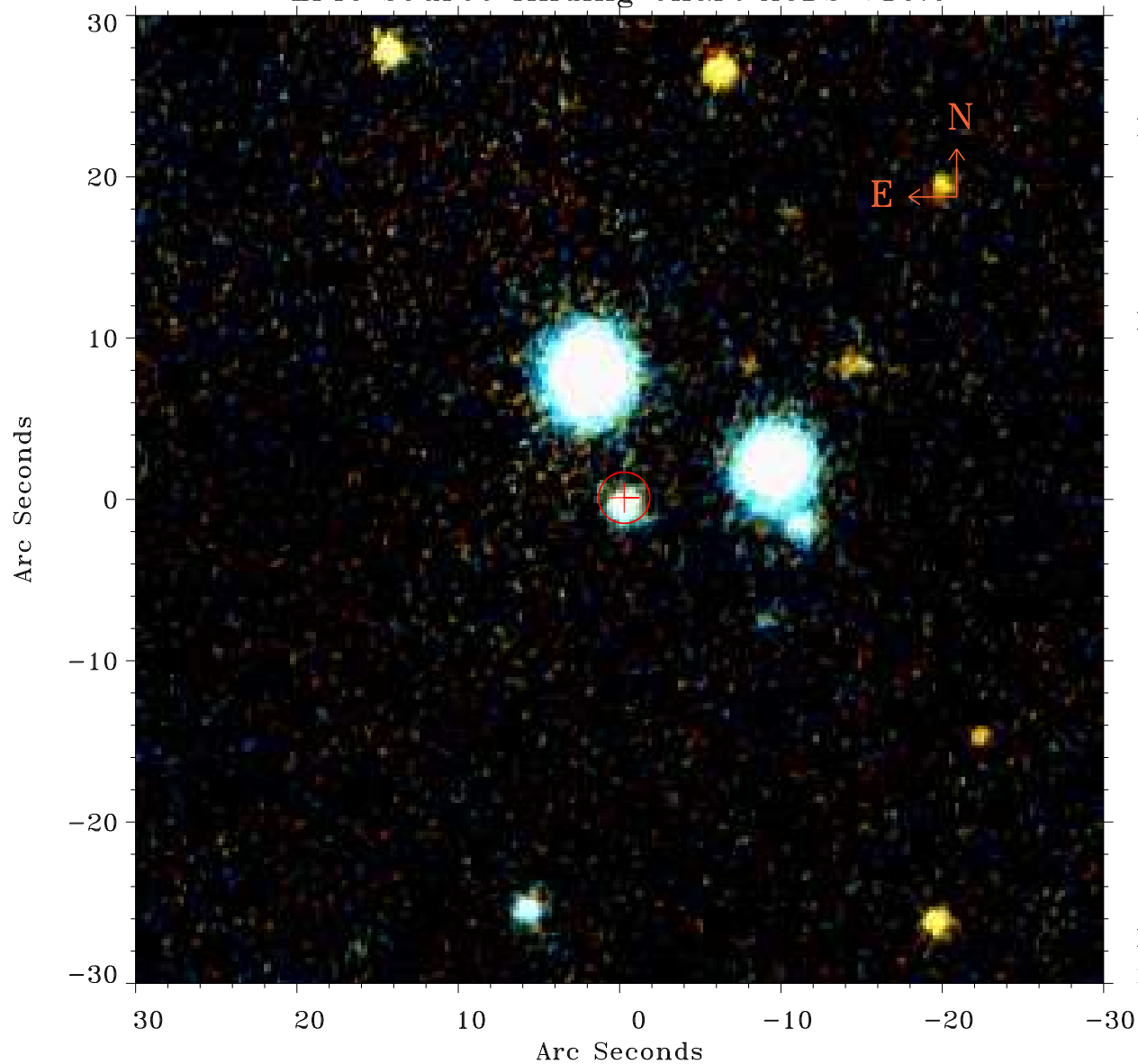


# EPIC source finding chart ACDS V10.0



Principal Investigator :

Dr Elisabetta Memola

XMM target name :

NGC 6869

OBS ID : 556240601

Source number : 5

X-ray coordinates :

$\alpha$  : 20 01 48.62

$\delta$  : +66 06 18.5

Center coordinates :

$\alpha$  : 20 01 48.63

$\delta$  : +66 06 18.5

Plate reference :

Origin : PanSTARRS-DR1

Color coding :

z band ●

(z+g)/2 ●

g band ●

Error:

R90 : 1.6 arcsec

XMM SSC

May 3 17:31:43 2019