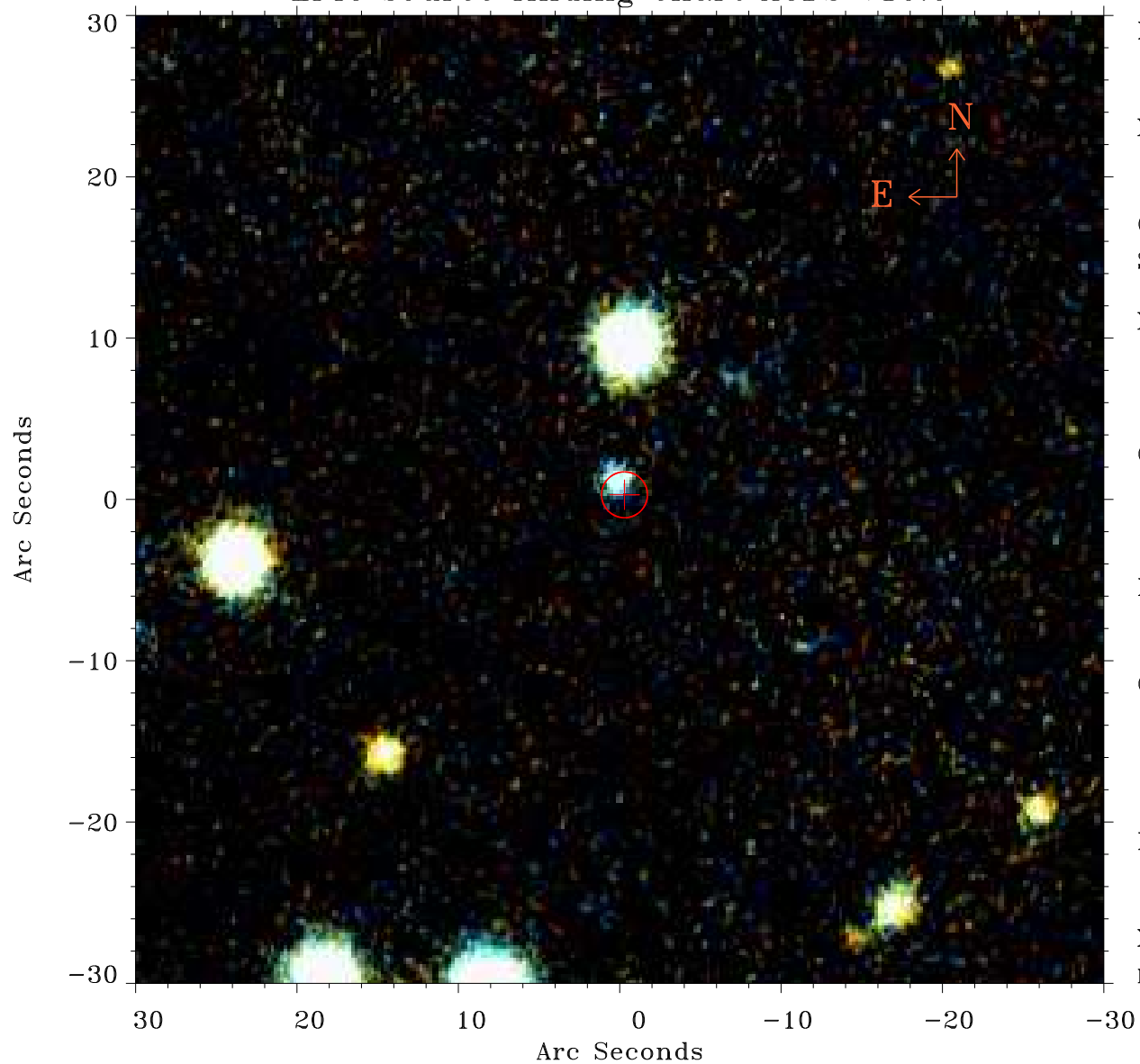


EPIC source finding chart ACDS V10.0



Principal Investigator :

Dr Elisabetta Memola

XMM target name :

NGC 6869

OBS ID : 556240601

Source number : 6

X-ray coordinates :

α : 20 00 24.82

δ : +66 17 03.8

Center coordinates :

α : 20 00 24.84

δ : +66 17 03.7

Plate reference :

Origin : PanSTARRS-DR1

Color coding :

z band ●

(z+g)/2 ●

g band ●

Error:

R90 : 1.4 arsec

XMM SSC

May 3 17:29:48 2019