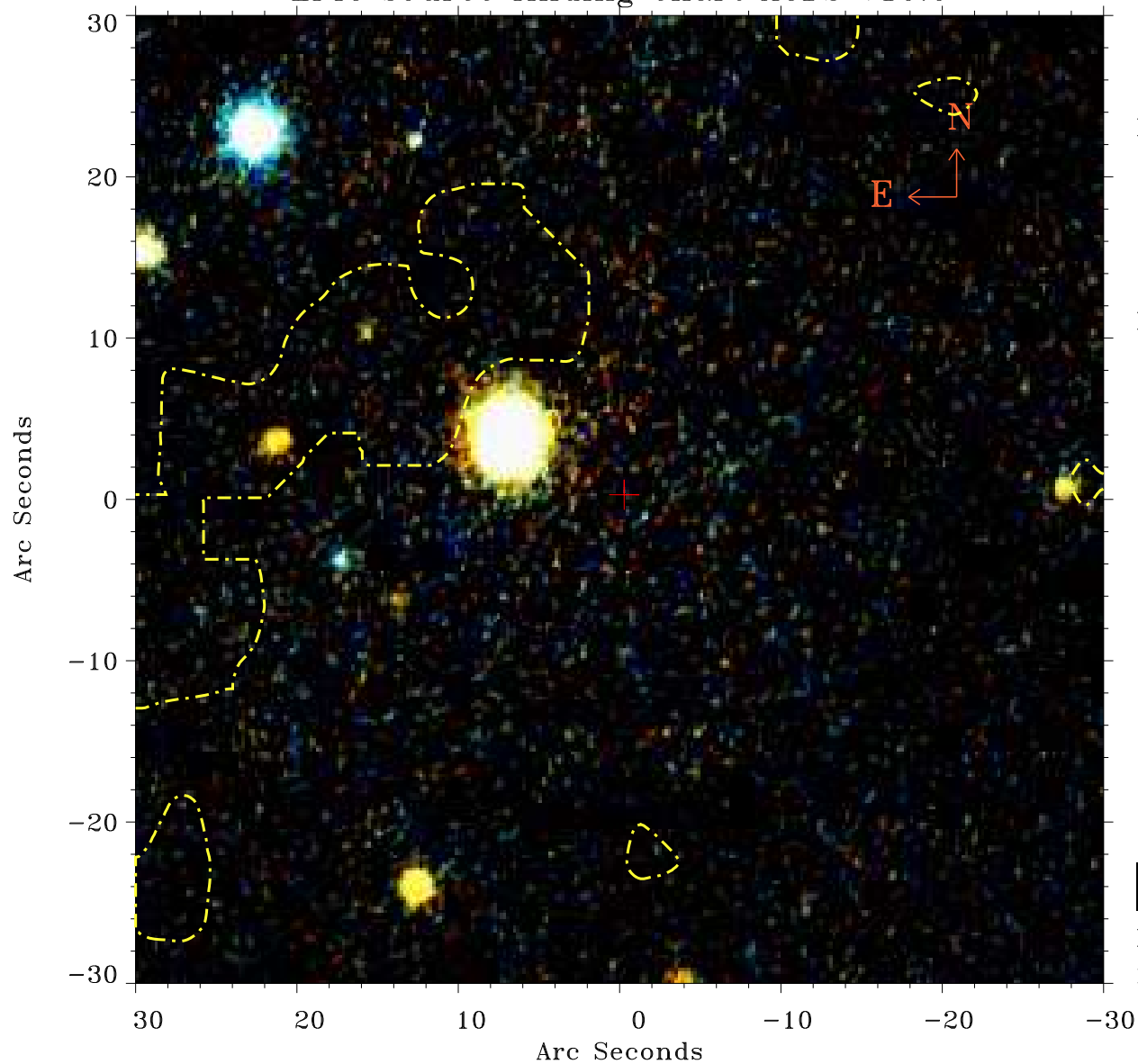


EPIC source finding chart ACDS V10.0



Principal Investigator :

Dr Elisabetta Memola

XMM target name :

NGC 6869

OBS ID : 556240601

Source number : 29

X-ray coordinates :

α : 20 01 03.59

δ : +66 08 37.5

Center coordinates :

α : 20 01 03.60

δ : +66 08 37.4

Plate reference :

Origin : PanSTARRS-DR1

Color coding :

z band ●

(z+g)/2 ●

g band ●

Contour levels (counts) :



XMM SSC

May 3 17:30:41 2019