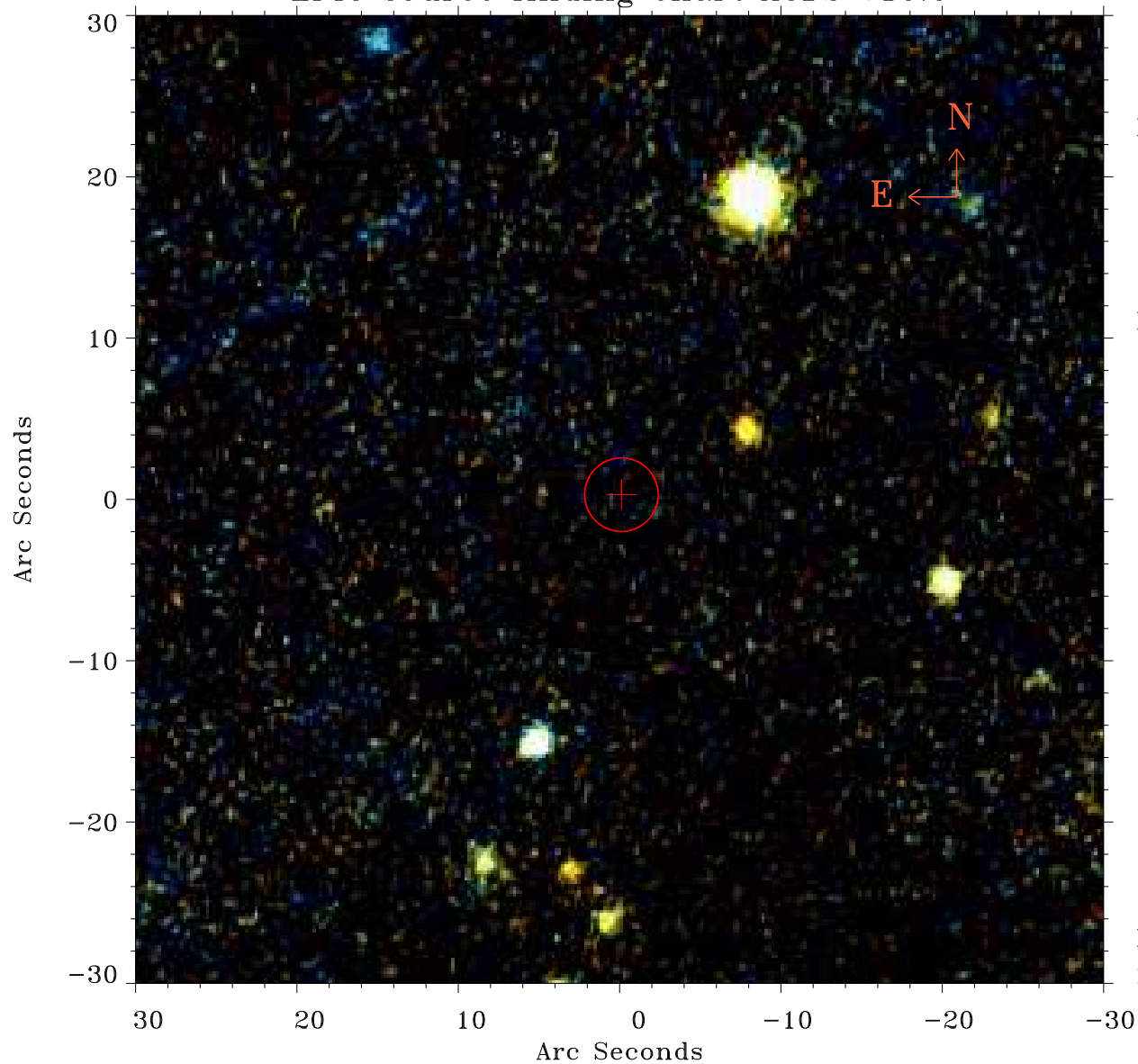


EPIC source finding chart ACDS V10.0



Principal Investigator :

Dr Elisabetta Memola

XMM target name :

NGC 6869

OBS ID : 556240601

Source number : 31

X-ray coordinates :

α : 19 59 47.78

δ : +66 05 47.0

Center coordinates :

α : 19 59 47.77

δ : +66 05 46.9

Plate reference :

Origin : PanSTARRS-DR1

Color coding :

z band ●

(z+g)/2 ●

g band ●

Error:

R90 : 2.3 arsec

XMM SSC

May 3 17:28:32 2019