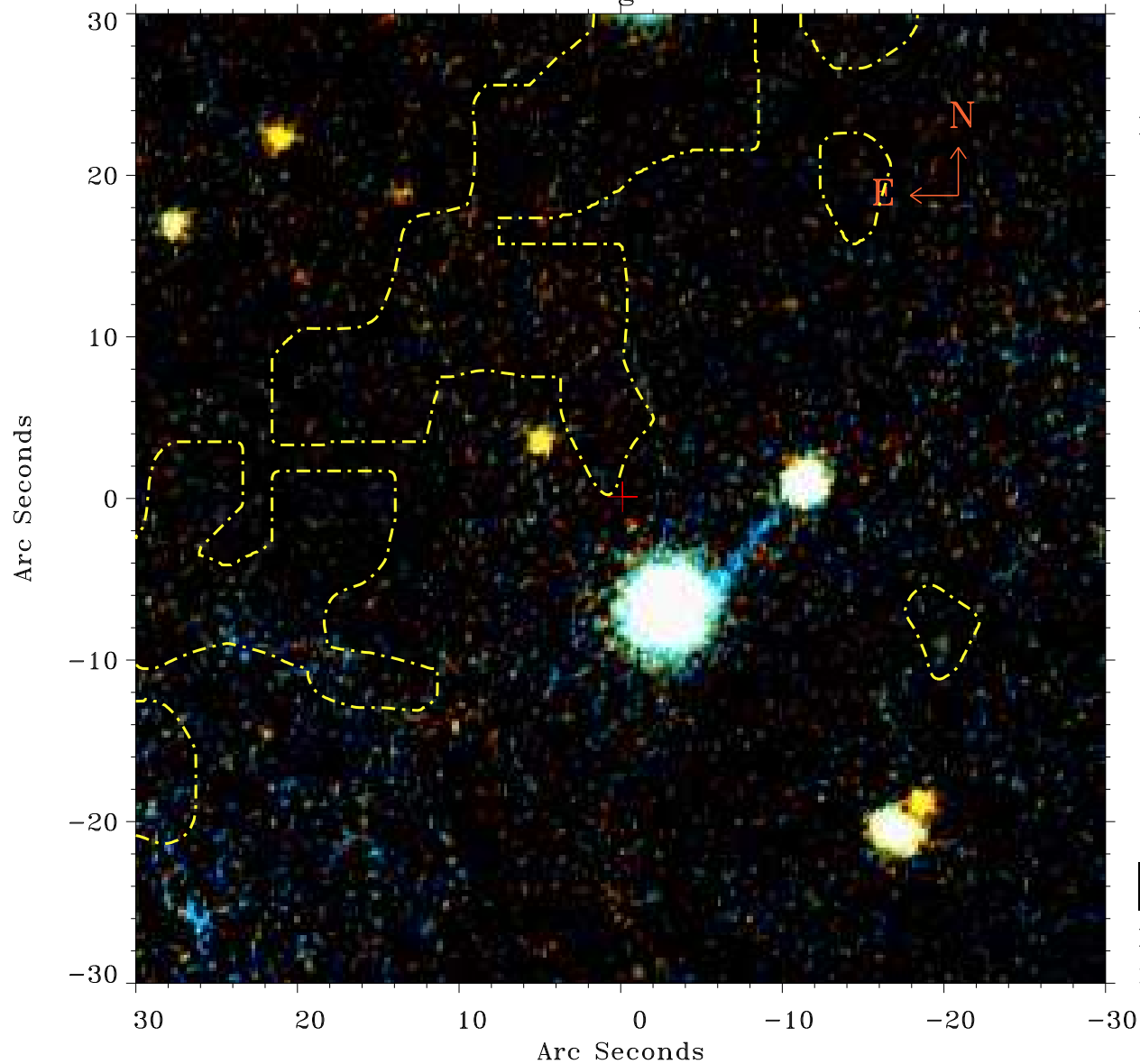


EPIC source finding chart ACDS V10.0



Principal Investigator :

Dr Elisabetta Memola

XMM target name :

NGC 6869

OBS ID : 556240601

Source number : 40

X-ray coordinates :

α : 20 01 53.85

δ : +66 03 44.6

Center coordinates :

α : 20 01 53.84

δ : +66 03 44.7

Plate reference :

Origin : PanSTARRS-DR1

Color coding :

z band ●

(z+g)/2 ●

g band ●

Contour levels (counts) :



XMM SSC

May 3 17:31:55 2019