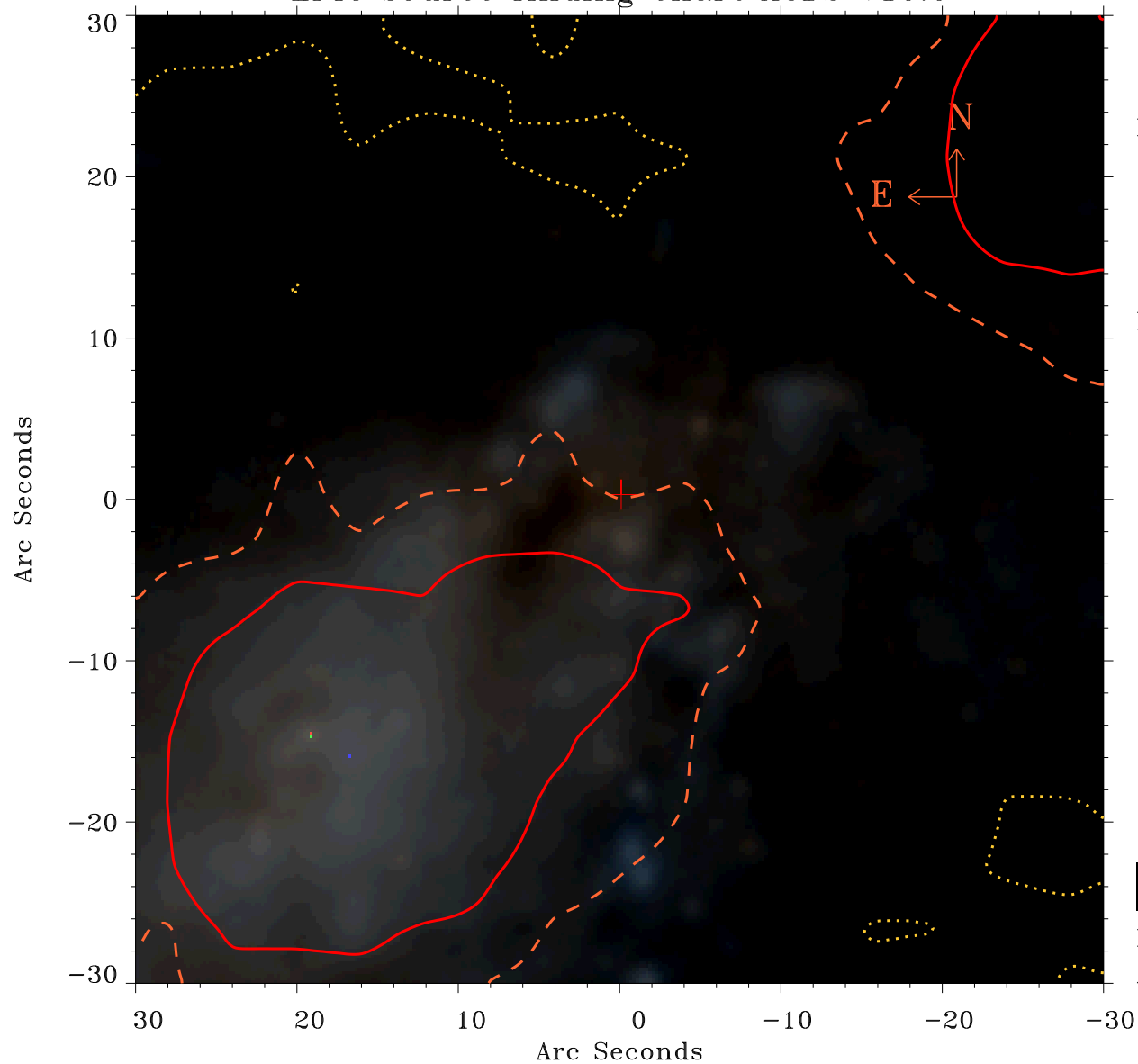


EPIC source finding chart ACDS V10.0



Principal Investigator :

Ms Jeanette Gladstone

XMM target name :

NGC 4490

OBS ID : 556300101

Source number : 2

X-ray coordinates :

α : 12 30 34.59

δ : +41 38 55.7

Center coordinates :

α : 12 30 34.58

δ : +41 38 55.6

Plate reference :

Origin : PanSTARRS-DR1

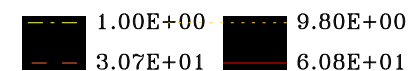
Color coding :

z band ●

(z+g)/2 ●

g band ●

Contour levels (counts) :



XMM SSC

Apr 23 02:23:52 2019