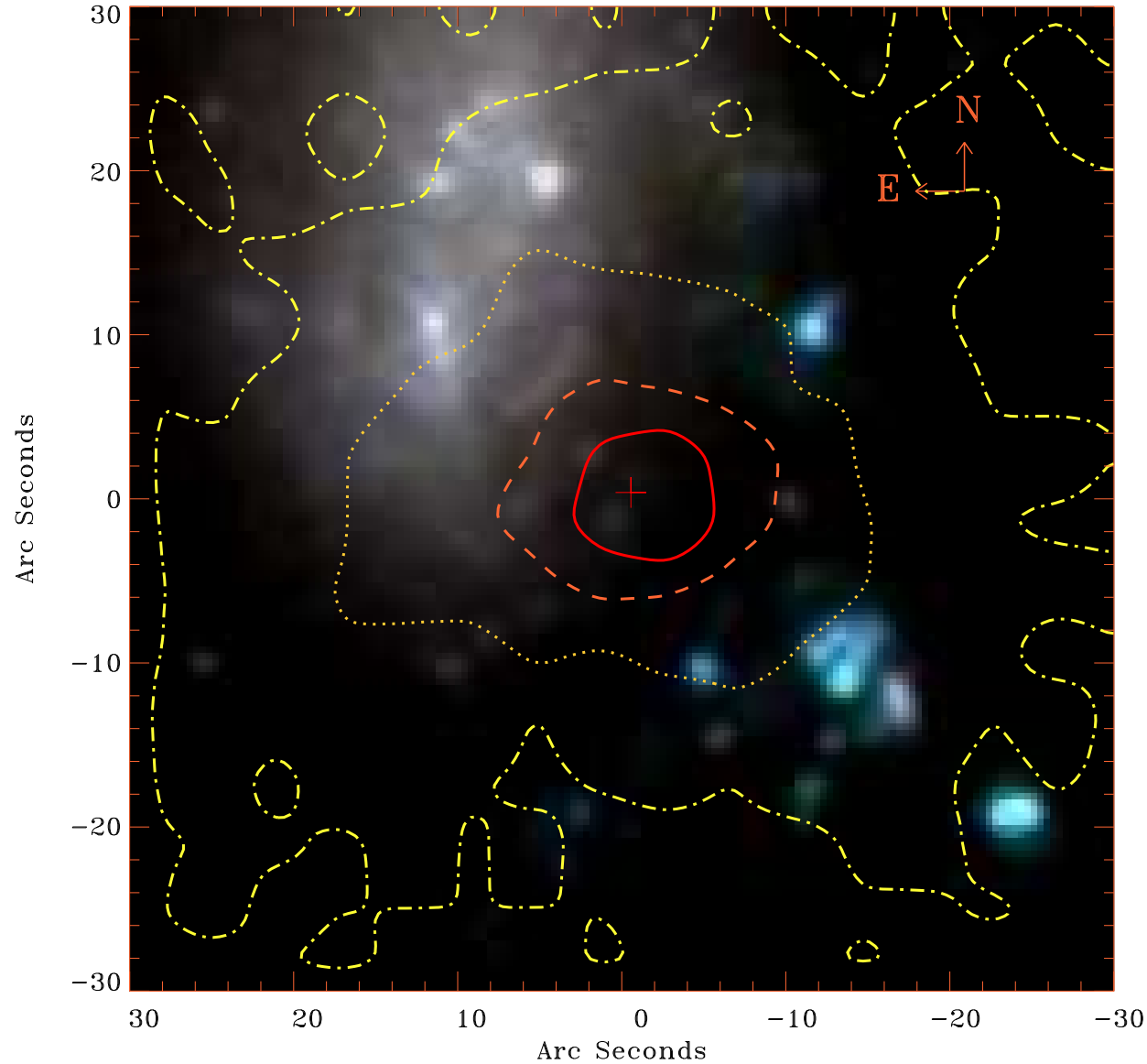


EPIC source finding chart V10.0



Principal Investigator :

Ms Jeanette Gladstone

XMM target name :

NGC 4490

OBS ID : 556300101

Source number : 4

X-ray coordinates :

α : 12 30 30.54

δ : +41 41 42.1

Center coordinates :

α : 12 30 30.55

δ : +41 41 42.1

Plate reference :

Origin : SDSS

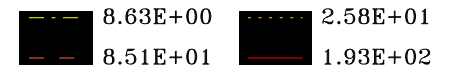
Color coding :

i band ●

r band ●

g band ●

Contour levels (counts) :



XMM SSC

Apr 23 02:15:37 2019